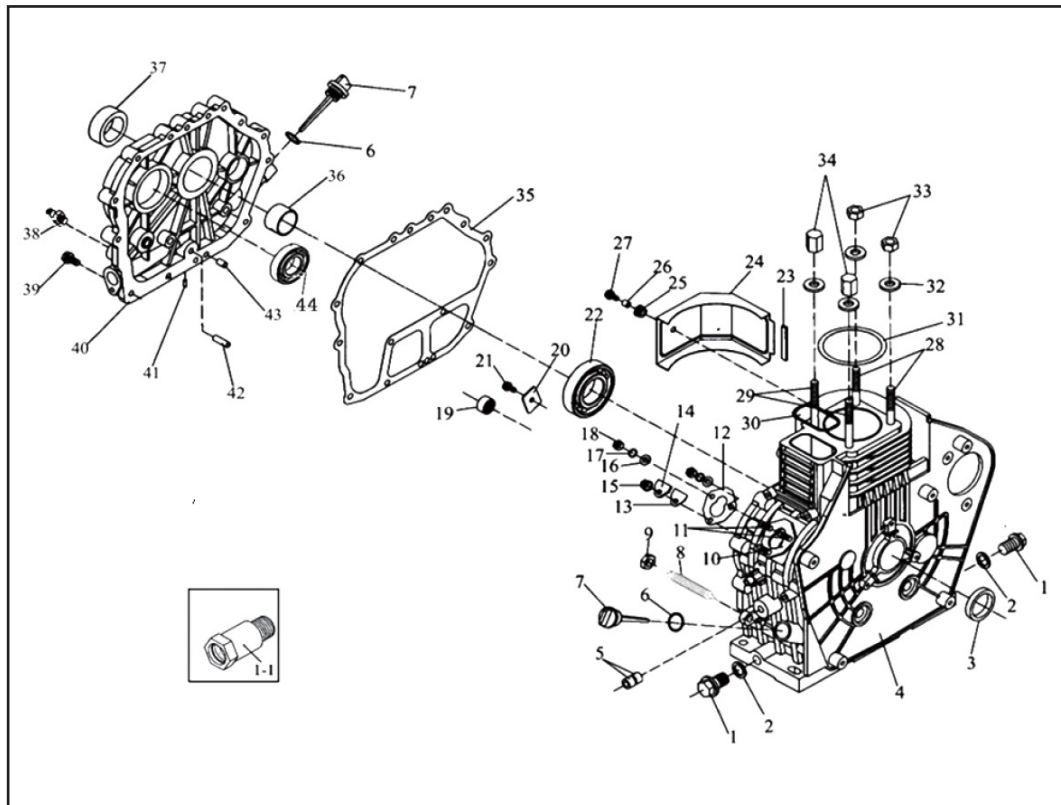


DESPIECE **SPAREPARTS**

**GENERADORES DIÉSEL:
BXGND5300E / BXGND6300E
BXGND7900E**

MOTOR: D400E

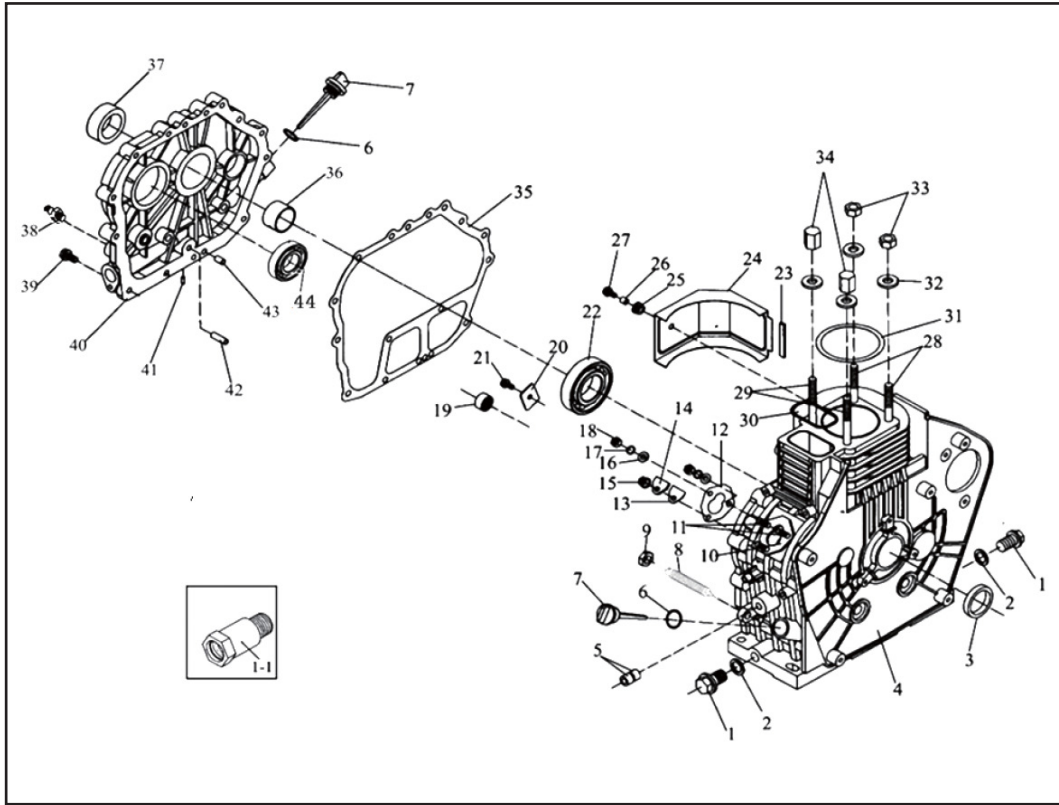




Nº	REF.	DESCRIPCIÓN (ES)	DESCRIPTION (EN)
1	SP-D400-A01	TORNILLO DE DRENAJE M16X16X1,5	DRAIN PLUG SCREW M16X16X15.5
1-1	SP-D400-A01-1	PROLONGADOR DEL TORNILLO DE DRENAJE	CONNECTING BOLT OF DRAIN PLUG
2	SP-D400-A02	ARANDELA TORNILLO DRENAJE Ø16,5	WASHER UNIT OF DRAIN PLUG Ø16.5
3	SP-D400-A03	SELLO DE ACEITE REAL Ø35XØ50X8	REAL OIL SEAL Ø35xØ50x8
4	SP-D400-A04	BLOQUE DE MOTOR/CARTER	ENGINE BLOCK / CRANKCASE
4-1	SP-D450-A04-1	BLOQUE DE MOTOR/CARTER	ENGINE BLOCK / CRANKCASE
4-2	SP-D450-A04-2	BLOQUE DEL CILINDRO	CYLINDER BLOCK
4-3	SP-D450-A04-3	JUNTA DEL BLOQUE DE CILINDRO	CYLINDER BLOCK GASKET
4-4	SP-D500-A04-4	BLOQUE DE MOTOR/CARTER	ENGINE BLOCK / CRANKCASE
5	SP-D400-A05	COJINETE DE AGUJAS HK081410	NEEDLE BEARING HK081410
6	SP-D400-A06	JUNTA Ø24X2.4	O-RING Ø24x2.4
7	SP-D400-A07	VARILLA DE ACEITE	OIL DIPSTICK
8	SP-D400-A08	TOPE ACELERADOR	FUEL CONTROLLER ASSY
9	SP-D400-A09	TUERCA M10X1,25	NUT M10x1.25
10	SP-D400-A10	PERNO(CORTO) AM6X30	BOLT (SHORT) AM6x30
11	SP-D400-A11	PERNO(LARGO) AM6X36	BOLT (LONG) AM6x36
12	SP-D400-A12	JUNTA BOMBA COMBUSTIBLE 0,1~0.5MM	FUEL INJECTION PUMP WASHER 0.1~0.5MM
13	SP-D400-A13	JUNTA BOMBA	JOINT WASHER
14	SP-D400-A14	PLACA DE SELLO	SEAL PLATE
15	SP-D400-A15	TUERCA M6	NUT M6
16	SP-D400-A16	Ø6 ARANDELA PLANA	FLAT WASHER Ø6
17	SP-D400-A17	Ø6 ARANDELA ELASTICA	SPRING WASHER Ø6
18	SP-D400-A18	TUERCA M6	NUT M6
19	SP-D400-A19	IKO COJINETE DE AGUJA TIA1512Z	IKO NEEDLE BEARING TIA1512Z
20	SP-D400-A20	PLACA FIJACION	THRUST PLATE
21	SP-D400-A21	PERNO BRIDA M8X12	FLANGE BOLT M8x12
22	SP-D400-A22	COJINETE DE BOLAS 6308	BALL BEARING 6308
23	SP-D400-A23	AMORTIGUADOR DE CHOQUE	CUSHION SHOCK ABSORBER
24	SP-D400-A24	DEFLECTOR DEL CILINDRO	CYLINDER BAFFLE
25	SP-D400-A25	AMORTIGUADOR DE VIBRACIONES	VIBRATION ISOLATION CUSHION BLOCK
26	SP-D400-A26	VAINA	SHEATH
27	SP-D400-A27	TORNILLO DE BRIDA M6X18	FLANGE BOLT M6x18
28	SP-D400-A28	TORNILLO DEL CILINDRO AM10X1.5X108	CYLINDER HEAD STUD BOLT(SHORT) AM10x1.5x108
28-1	SP-D450-A28-1	TORNILLO DEL CILINDRO AM10X1.5X190	CYLINDER HEAD STUD BOLT (SHORT) AM10x1.5x190
28-2	SP-D500-A28-2	TORNILLO DEL CILINDRO AM12X1.5X108	CYLINDER HEAD STUD BOLT (SHORT) AM12x1.5x108
29	SP-D400-A29	TORNILLO DEL CILINDRO AM10X1.5X122	CYLINDER HEAD STUD BOLT(LONG) AM10x1.5x122
29-1	SP-D450-A29-1	TORNILLO DEL CILINDRO AM10X1.5X204	CYLINDER HEAD STUD BOLT (LONG) AM10x1.5x204

FAST MOVING PARTS

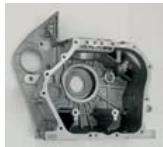
RECOMMENDED PARTS



Nº	REF.	DESCRIPCIÓN (ES)	DESCRIPTION (EN)
29-2	SP-D500-A29-2	TORNILLO DEL CILINDRO AM12X1.5X121	CYLINDER HEAD STUD BOLT (LONG) AM12X1.5X121
30	SP-D400-A30	JUNTA CULATA GOMA RECTANGULAR 5.1X2.3	RECTANGLE RING 5.1x2.3
31	SP-D400-A31	JUNTA CULATA COBRE 0.1~0.5MM	CYLINDER HEAD SHIM (0.1~0.5MM)
31-1	SP-D450-A31-1	JUNTA CULATA COBRE 0.1~0.5MM	CYLINDER HEAD SHIM (0.1~0.5MM)
31-2	SP-D500-A31-2	JUNTA CULATA COBRE 0.3MM	CYLINDER HEAD SHIM (0.3MM)
32	SP-D400-A32	ARANDELA DE LA CULATA Ø10.5	CYLINDER HEAD NUT GASKET Ø10.5
32-1	SP-D500-A32-1	ARANDELA DE LA CULATA Ø10.5	CYLINDER HEAD NUT GASKET Ø10.5
33	SP-D400-A33	TUERCA DE LA CULATA (CORTA)	CYLINDER HEAD NUT(SHORT)
33-1	SP-D500-A33-1	TUERCA DE LA CULATA (CORTA)	CYLINDER HEAD NUT(SHORT)
34	SP-D400-A34	TUERCA DE LA CULATA (LARGA)	CYLINDER HEAD NUT(LONG)
34-1	SP-D500-A34-1	TUERCA DE LA CULATA (LARGA)	CYLINDER HEAD NUT(LONG)
35	SP-D400-A35	JUNTA BLOQUE MOTOR	CRANKCASE COVER WASHER
36	SP-D400-A36	CASQUILLO PRINCIPAL	MAIN BUSH
37	SP-D400-A37	RETEN FRONTAL DE ACEITE Ø35XØ50X10	FRONT OIL SEAL Ø35xØ50x10
38	SP-D400-A38	SENSOR PRESIÓN DE ACEITE	LOW OIL ALARM
38-1	SP-D400-A38-1	TAPÓN ROSCADO HEXAGONAL INTERNO	HEXAGONAL INTERNAL SCREW PLUG
39	SP-D400-A39	REMACHE M8X33,5	BOLT M8x33.5
40	SP-D400-A40	TAPA BLOQUE MOTOR	CRANKCASE COVER
40-1	SP-D400-A40-1	TAPA BLOQUE MOTOR CON DESCOMPRESOR	CRANKCASE COVER WITH DECOMPRESSOR
40-2	SP-D500-A40-2	TAPA BLOQUE MOTOR CON DESCOMPRESOR	CRANKCASE COVER WITH DECOMPRESSOR
41	SP-D400-A41	REMACHE 8X8	PLUNGER 8x8
42	SP-D400-A42	CONDUCTO DE ACEITE	OIL CONDUIT
43	SP-D400-A43	PIN 8X12	PIN 8x12
44	SP-D400-A44	COJINETE DE BOLAS 6207	BALL BEARING 6207



SP-D400-A04



SP-D450-A04-1



SP-D450-A04-2



SP-D450-A04-3



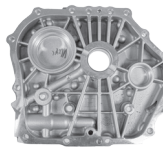
SP-D400-A28-1



SP-D400-A38



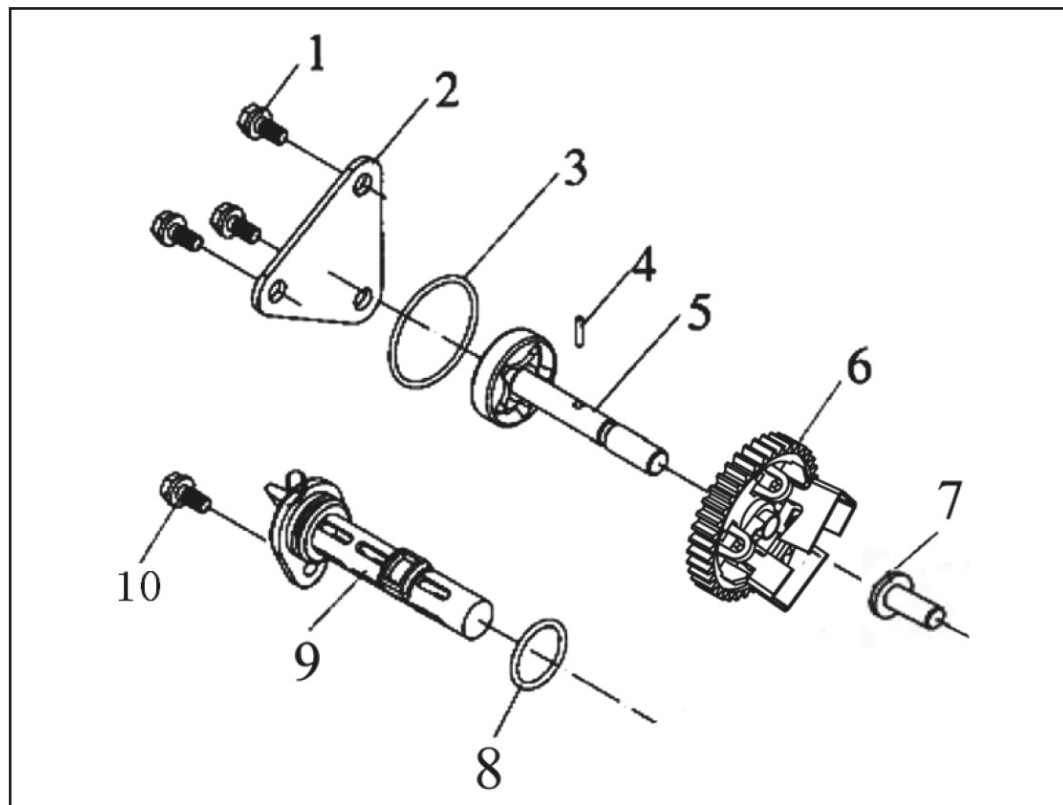
SP-D400-A38-1



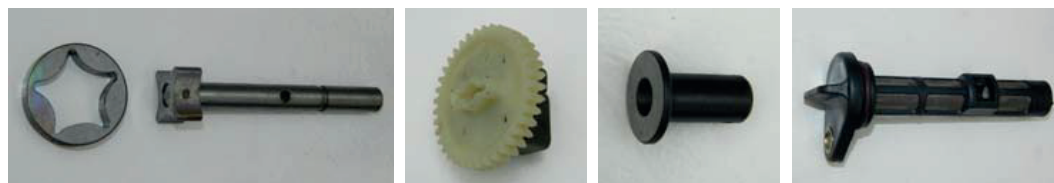
SP-D400-A40



SP-D400-A40-1



Nº	REF.	DESCRIPCIÓN (ES)	DESCRIPTION (EN)
1	SP-D400-B01	TORNILLO M6X12	BOLT M6×12
2	SP-D400-B02	TAPA BOMBA DE ACEITE	LUBE OIL PUMP COVER
3	SP-D400-B03	JUNTA TORICA Ø34.5X1.8	O-RING Ø34.5×1.8
4	SP-D400-B04	PIN 3X16	PIN 3×16
5	SP-D400-B05	UNIDAD DE LA BOMBA DE ACEITE DEL MOTOR	ENGINE OIL PUMP UNIT
6	SP-D400-B06	GOVERNADOR DE LA BOMBA DE ACEITE	DRIVE GEAR OF LUBE OIL PUMP
7	SP-D400-B07	TETON DE EMPUJE DEL REGULADOR	GOVERNOR PUSH REEL
8	SP-D400-B08	JUNTA TORICA Ø20X2,52	O-RING Ø20×2.52
9	SP-D400-B09	CONJUNTO DEL FILTRO DE ACEITE	LUBE OIL FILTER ASSY
10	SP-D400-B10	TORNILLO M6X14	BOLT M6×14

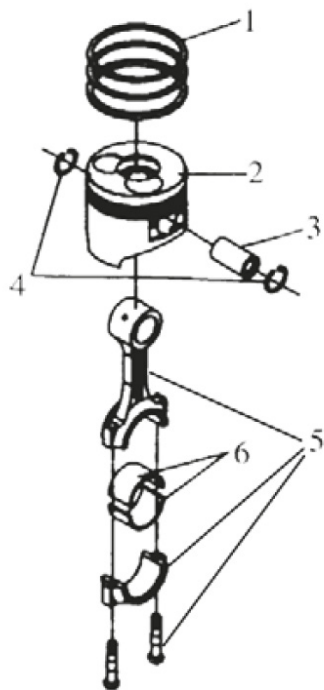


SP-D400-B05

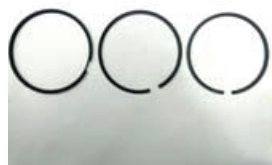
SP-D400-B06

SP-D400-B07

SP-D400-B09



Nº	REF.	DESCRIPCIÓN (ES)	DESCRIPTION (EN)
1	SP-D400-C01	JUEGO SEGMENTOS	PISTON RING SET
1-1	SP-D450-C01-1	JUEGO SEGMENTOS	PISTON RING SET
1-2	SP-D500-C01-2	JUEGO SEGMENTOS	PISTON RING SET
2	SP-D400-C02	PISTON	PISTON
2-1	SP-D450-C02-1	PISTON	PISTON
2-2	SP-D500-C02-2	PISTON	PISTON
2-3	SP-D400-C02-NO FA	PISTON NO FA	PISTON NO FA
3	SP-D400-C03	BURLON DEL PISTON	PISTON PIN
3-1	SP-D450-C03-1	BURLON DEL PISTON	PISTON PIN
3-2	SP-D500-C03-2	BURLON DEL PISTON	PISTON PIN
4	SP-D400-C04	CLIP DEL BULON DEL PISTON	PISTON PIN CLIP
5	SP-D400-C05	CONJUNTO BIELA	CONNECTING ROD ASSY
5-1	SP-D450-C05-1	CONJUNTO BIELA	CONNECTING ROD ASSY
5-2	SP-D500-C05-2	CONJUNTO BIELA	CONNECTING ROD ASSY
6	SP-D400-C06	CASQUILLOS BIELA (JUEGO)	CONNECTING ROD BUSH (SET)
6-1	SP-D500-C06-1	CASQUILLOS BIELA (JUEGO)	CONNECTING ROD BUSH (SET)



SP-D450-C01-1



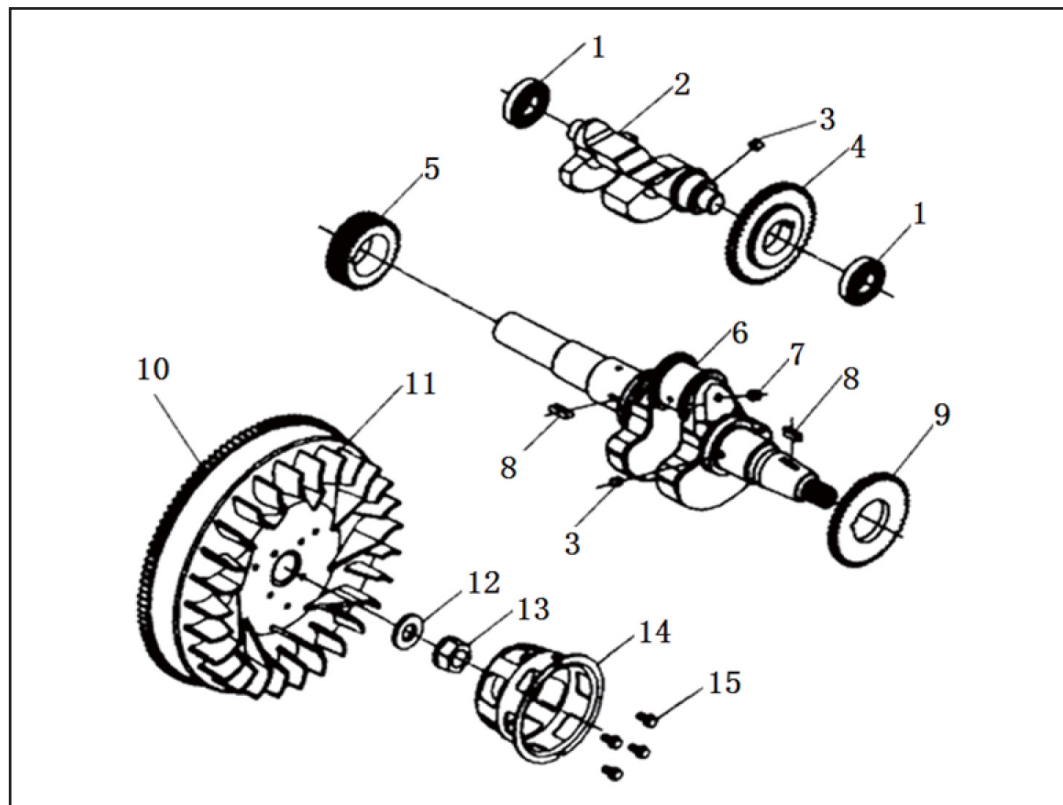
SP-D450-C02-1



SP-D450-C03-1



SP-D450-C05-1



Nº	REF.	DESCRIPCIÓN (ES)	DESCRIPTION (EN)
1	SP-D400-D01	COJINETE DE BOLAS 6203	BALL BEARING 6203
2	SP-D400-D02	EJE DE BALANCE	BALANCE SHAFT
3	SP-D400-D03	CHAVETA 5X7	KEY 5x7
4	SP-D400-D04	PIÑÓN EJE BALANCINES	TIMING GEAR OF BALANCE SHAFT
5	SP-D400-D05	PIÑÓN CIGÜEÑAL	CRANKSHAFT TIMING GEAR
6	SP-D400-D06	CIGÜEÑAL	CRANKSHAFT
6-1	SP-D450-D06-1	CIGÜEÑAL	CRANKSHAFT
6-2	SP-D500-D06-2	CIGÜEÑAL	CRANKSHAFT
7	SP-D400-D07	REMACHE DE ACERO Ø6.35	STEEL BALL Ø6.35
8	SP-D400-D08	CHAVETA 5X14	KEY 5x14
9	SP-D400-D09	PIÑÓN CIGÜEÑAL BALANCINES	DRIVE GEAR OF BALANCE SHAFT
10	SP-D400-D10	CORONA DENTADA VOLANTE DE INERCIA MOTOR	FLYWHEEL RING GEAR
11	SP-D400-D11	VOLANTE DE INERCIA	FLYWHEEL
11-1	SP-D450-D11-1	VOLANTE DE INERCIA	FLYWHEEL
11-2	SP-D450-D11-2	VENTILADOR DEL VOLANTE DE INERCIA	FLYWHEEL FAN
11-3	SP-D450-D11-3	VOLANTE DE INERCIA	FLYWHEEL
12	SP-D400-D12	ARANDELA Ø18	FLYWHEEL NUT WASHER Ø18
13	SP-D400-D13	TUERCA M18X1.5	FLYWHEEL NUT M18x1.5
14	SP-D400-D14	CAMPANA DE ARRANQUE	STARTING CLAW
14-1	SP-D450-D14-1	CAMPANA DE ARRANQUE	STARTING CLAW
15	SP-D400-D15	TORNILLO M6X12	FLANG BOLT M6x12
15-1	SP-D450-D15-1	TORNILLO M8X12	FLANG BOLT M8x12



SP-D400-D02



SP-D400-D06



SP-D400-D11



SP-D450-D11-1



SP-D450-D11-2



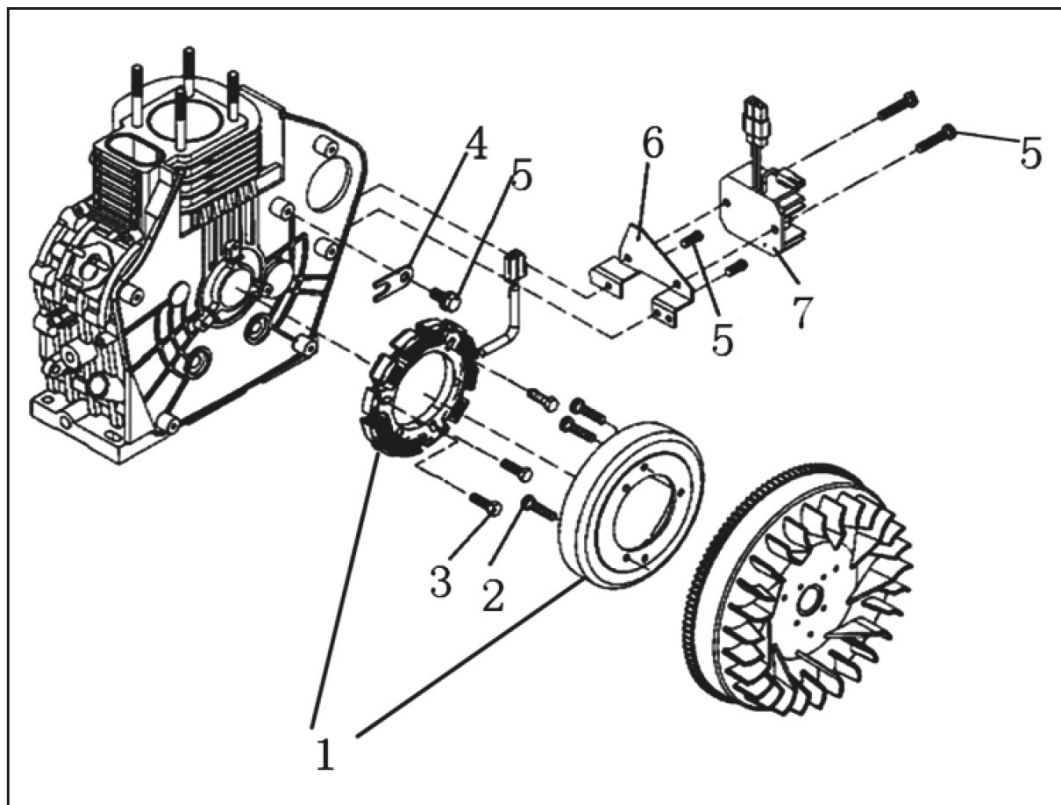
SP-D450-D14-1



SP-D450-D11-3

FAST MOVING PARTS

RECOMMENDED PARTS



Nº	REF.	DESCRIPCIÓN (ES)	DESCRIPTION (EN)
1	SP-D400-E01	BOBINA CARGA MOTOR	FLYWHEEL ALTERNATOR
2	SP-D400-E02	TORNILLO M6X12	SCREW M6x12
3	SP-D400-E03	TORNILLO M6X22	SCREW M6x22
4	SP-D400-E04	PLACA FIJADOR CABLE	RETAINER PLATE
5	SP-D400-E05	TORNILLO M6X12	SCREW M6x12
6	SP-D400-E06	SOPORTE DE REGULADOR DE VOLTAJE	SUPPORT OF VOLTAGE REGULATOR
7	SP-D400-E07	REGULADOR/RECTIFICADOR DE CARGA	VOLTAGE REGULATOR ASSY



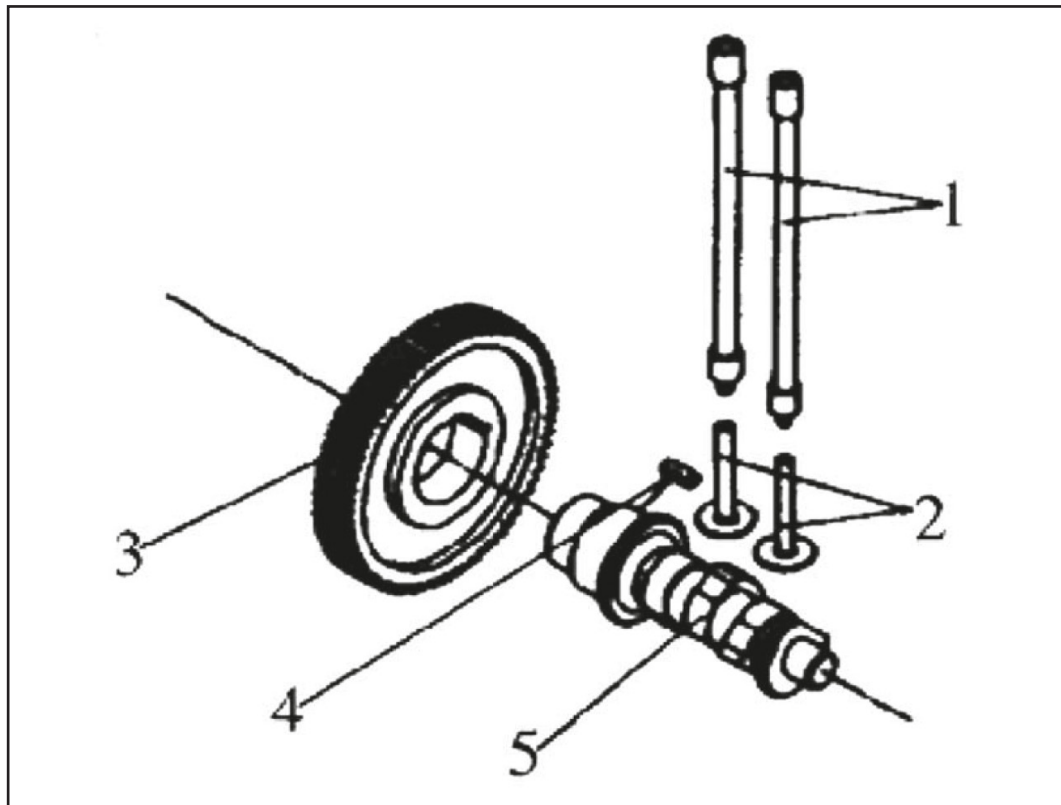
SP-D400-E01



SP-D400-E07

FAST MOVING PARTS

RECOMMENDED PARTS



Nº	REF.	DESCRIPCIÓN (ES)	DESCRIPTION (EN)
1	SP-D400-F01	VARILLA DE EMPUJE (JUEGO) L=19,7cm	VALVE PUSH ROD ASSY L=19.7cm
1-1	SP-D450-F01-1	VARILLA DE EMPUJE (JUEGO) L=22cm	VALVE PUSH ROD ASSY L=22cm
1-2	SP-D500-F01-1	VARILLA DE EMPUJE (JUEGO) L=24cm	VALVE PUSH ROD ASSY L=24cm
2	SP-D400-F02	ASIENTO EMPUJADOR (JUEGO)	VALVE TAPPET
3	SP-D400-F03	PIÑÓN ARBOL LEVAS	CAMSHAFT TIMING GEAR
4	SP-D400-F04	CHAVETA 5X14	KEY 5x14
5	SP-D400-F05	ARBOL DE LEVAS	CAMSHAFT
5-1	SP-D500-F05-1	ARBOL DE LEVAS	CAMSHAFT
5-2	SP-D500-F05-2	ARBOL DE LEVAS COMPLETO CON DESCOMPRESOR AUTOMATICO	CAMSHAFT



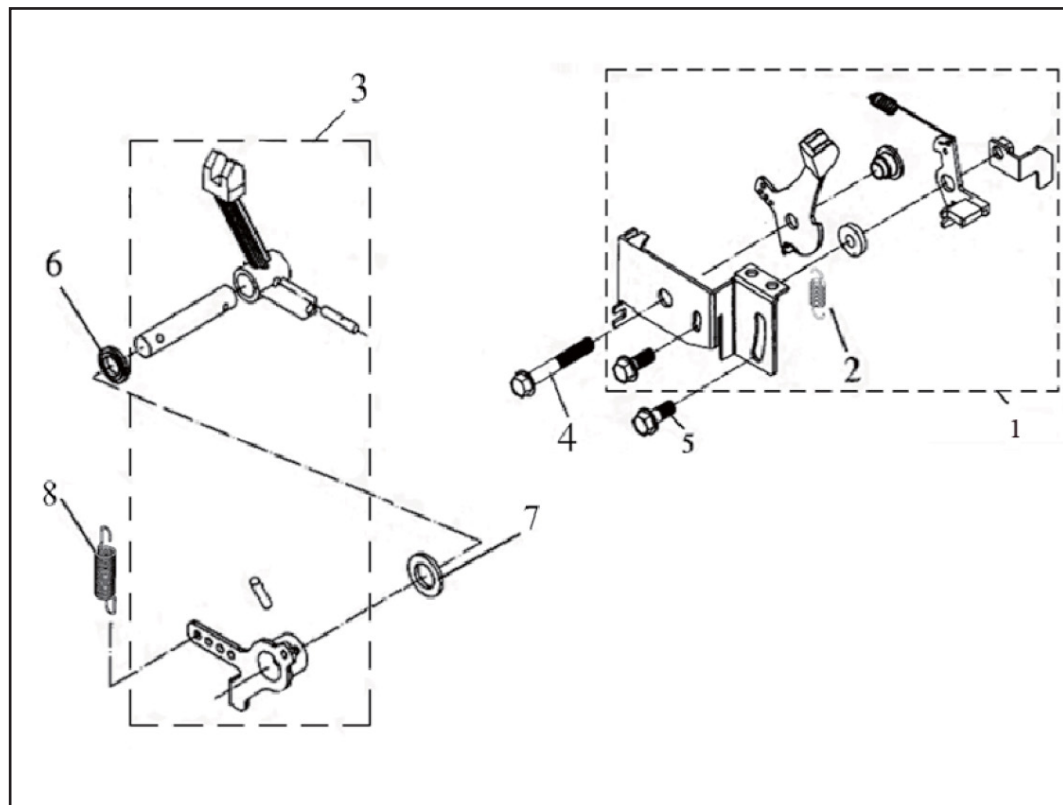
SP-D400-F01



SP-D400-F02



SP-D400-F05



Nº	REF.	DESCRIPCIÓN (ES)	DESCRIPTION (EN)
1	SP-D400-G01	CONJUNTO CONTROLADOR DE VELOCIDAD STOP-START	STOP-START SPEED GOVERNOR ASSY
1-1	SP-D400-G01-1	CONJUNTO CONTROLADOR DE VELOCIDAD COMÚN	COMMON SPEED GOVERNOR ASSY
2	SP-D400-G02	MUELLE DE RETROCESO II	RETRUN SPRING II
3	SP-D400-G03	HORQUILLA INTERIOR MOTOR GOVERNADOR	GOVERNOR LEVEL ASSY
4	SP-D400-G04	TORNILLO M6X18	FLANGE BOLT M6x18
5	SP-D400-G05	TORNILLO M6X14	FLANGE BOLT M6x14
6	SP-D400-G06	RETEN 2,6*14*8	LEVEL SHAFT OIL SEAL
7	SP-D400-G07	ARANDELA	LEVEL SHAFT GASKET
8	SP-D400-G08	MUELLE ACELERADOR	GOVERNOR SPRING
9	SP-D400-G09	MUELLE DE RETROCESO I	RETURN SPRING I
10	SP-D400-G10	MUELLE	SPRING



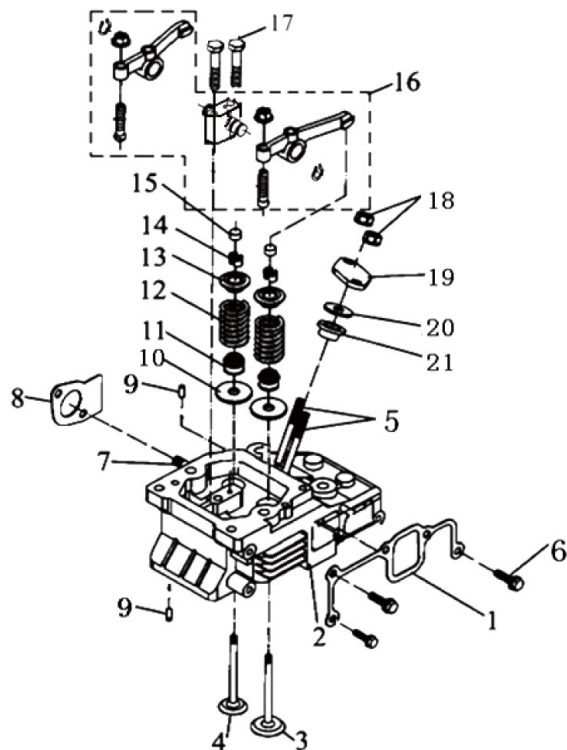
SP-D400-G01



SP-D400-G01-1



SP-D400-G03



SP-D450-H02-1

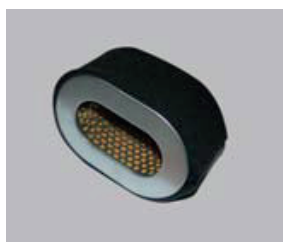
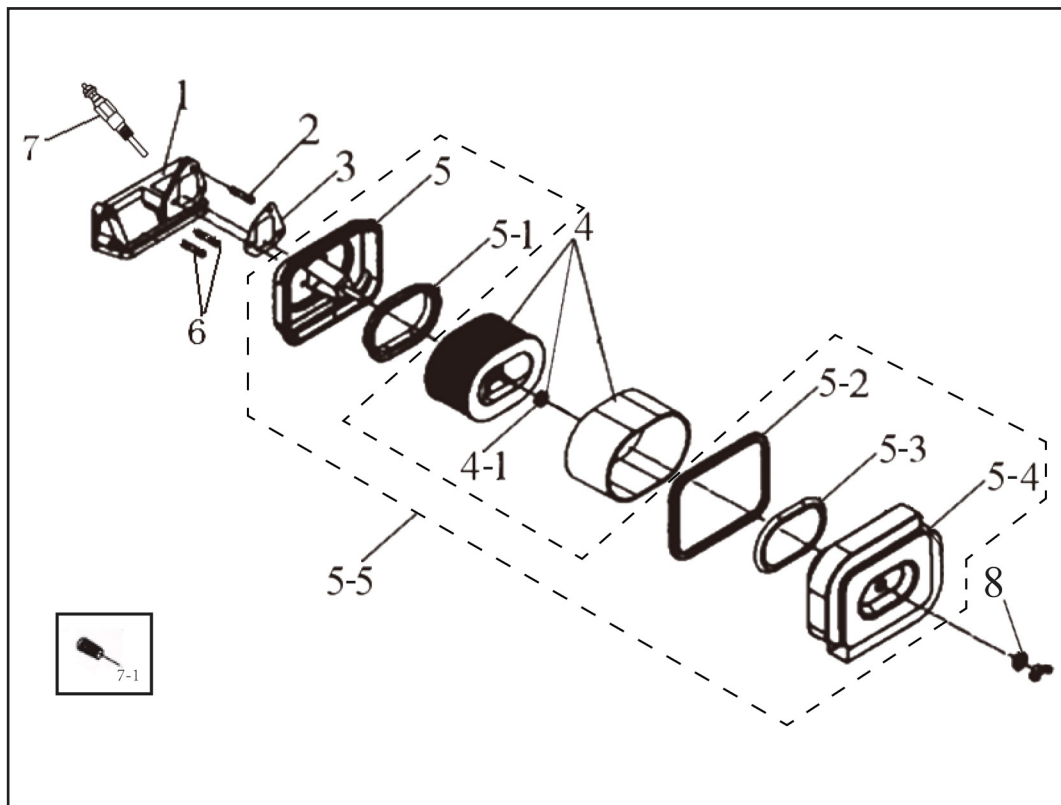


SP-D450-H04-1



SP-D450-H03-1

Nº	REF.	DESCRIPCIÓN (ES)	DESCRIPTION (EN)
1	SP-D400-H01	JUNTA COLECTOR ADMISION	INTAKE PIPE SHIM
1-1	SP-D500-H01-1	JUNTA COLECTOR ADMISION	INTAKE PIPE SHIM
2	SP-D400-H02	CULATA	CYLINDER HEAD
2-1	SP-D450-H02-1	CULATA	CYLINDER HEAD
2-2	SP-D500-H02-2	CULATA	CYLINDER HEAD
3	SP-D400-H03	VALVULA ADMISION	INTAKE VALVE
3-1	SP-D450-H03-1	VALVULA ADMISION	INTAKE VALVE
3-2	SP-D500-H03-2	VALVULA ADMISION	INTAKE VALVE
4	SP-D400-H04	VALVULA ESCAPE	EXHAUST VALVE
4-1	SP-D450-H04-1	VALVULA ESCAPE	EXHAUST VALVE
4-2	SP-D500-H04-2	VALVULA ESCAPE	EXHAUST VALVE
5	SP-D400-H05	TORNILLO DOBLE ROSCA AM6 x 55	STUD AM6x55
5-1	SP-D450-H05-1	TORNILLO DOBLE ROSCA AM6 x 55	STUD AM6x55
6	SP-D400-H06	TORNILLO M6 x 25	BOLT M6x25
7	SP-D400-H07	TORNILLO DOBLE ROSCA M8 x 20	STUD M8x20
7-1	SP-D450-H07-1	TORNILLO DOBLE ROSCA M10X25	STUD M10X25
8	SP-D400-H08	JUNTA ESCAPE CULATA	EXHAUST PIPE WASHER
8-1	SP-D500-H08-1	JUNTA ESCAPE CULATA	EXHAUST PIPE WASHER
9	SP-D400-H09	PIN 4 x 8	PIN 4x8
10	SP-D400-H10	ARANDELA BASE MUELLE	VALVE SPRING GASKET
10-1	SP-D500-H10-1	ARANDELA BASE MUELLE	VALVE SPRING GASKET
11	SP-D400-H11	RETEN VÁLVULA	VALVE CONDUIT OIL SEAL
12	SP-D400-H12	MUELLE VALVULA	VALVE SPRING
12-1	SP-D500-H12-1	MUELLE VALVULA	VALVE SPRING
13	SP-D400-H13	ASIENTO SUPERIOR MUELLE	VALVE SPRING SEAT
13-1	SP-D500-H13-1	ASIENTO SUPERIOR MUELLE	VALVE SPRING SEAT
14	SP-D400-H14	CLIP DE RETENCIÓN DE LA VÁLVULA	VALVE RETAINING CLIP
14-1	SP-D500-H14-1	CLIP DE RETENCIÓN DE LA VÁLVULA	VALVE RETAINING CLIP
15	SP-D400-H15	TOPE CABEZA DE LA VÁLVULA	VALVE ADJUSTING CUSHION
15-1	SP-D500-H15-1	TOPE CABEZA DE LA VÁLVULA	VALVE ADJUSTING CUSHION
16	SP-D400-H16	CONJUNTO BALANCINES	ROCK ARM ASSY
17	SP-D400-H17	TORNILLOS DEL CONJUNTO BALANCINES M8 x 1,25 x 50	SET BOLT OF ROCKER ARM SEAT M8x1.25x50
18	SP-D400-H18	TUERCA M6	FLANGE NUT M6
19	SP-D400-H19	PLACA FIJACIÓN INYECTOR	FUEL INJECTION VALVE RETAINER
20	SP-D400-H20	ARANDELAS DE AJUSTE DEL INYECTOR 0,1~.5MM	INJECTOR ADJUSTMENT WASHERS (0.1~0.5MM AS OPTIONAL)
21	SP-D400-H21	CASQUILLO TERMICO	HEAT INSULATOR
22	SP-D400-H22	CULATA COMPLETA	CYLINDER HEAD ASSEMBLY



SP-D400-I04

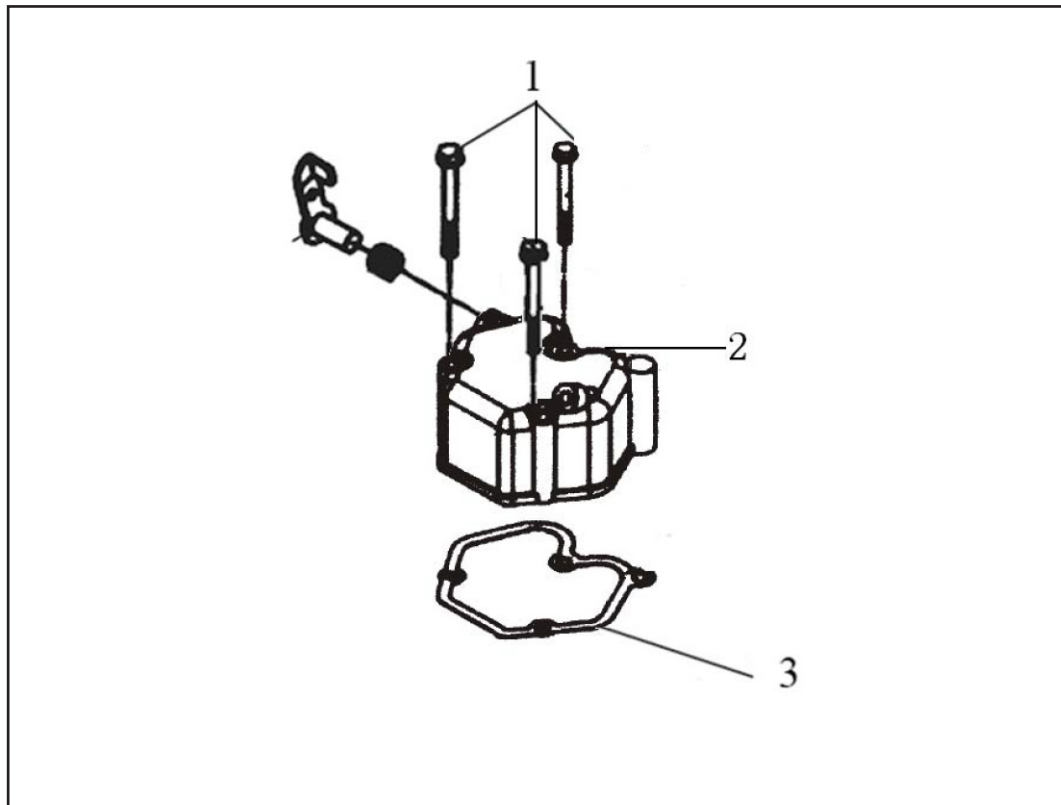


SP-D400-I07

Nº	REF.	DESCRIPCIÓN (ES)	DESCRIPTION (EN)
1	SP-D400-I01	TOBERA ADMISION	INLET PIPE
1-1	SP-D500-I01-1	TOBERA ADMISION	INLET PIPE
2	SP-D400-I02	TORNILLO M6X12	FLANG BOLT M6X12
3	SP-D400-I03	JUNTA TOBERA ADMISION A FILTRO	AIR CLEARNER GASKET
3-1	SP-D500-I03-1	JUNTA TOBERA ADMISION A FILTRO	AIR CLEARNER GASKET
4	SP-D400-I04	FILTRO DE AIRE COMPLETO PAPEL	AIR CLEANER ELEMENT ASSY AIR
4-1	SP-D400-I04-1	GOMA TORNILLO FIJACION FILTRO	CLEANER RUBBER
4-2	SP-D400-I04-OIL	FILTRO DE AIRE COMPLETO BAÑADO EN ACEITE	AIR CLEANER ELEMENT ASSY OIL
5	SP-D400-I05-LE	TAPA TRASERA CAJA FILTRO AIRE	AIR CLEANER FRONT COVER
5-1	SP-D400-I05-1-LE	JUNTA GOMA CARCASA TRASERA FILTRO AIRE	AIR CLEANER FRONT RUBBER
5-2	SP-D400-I05-2-LE	JUNTA GOMA CIERRE CAJA FILTRO DE AIRE	AIR CLEANER JOINT
5-3	SP-D400-I05-3-LE	JUNTA GOMA TAPA FILTRO AIRE	AIR CLEANER BACK RUBBER
5-4	SP-D400-I05-4-LE	TAPA DELANTERA DEL FILTRO DE AIRE	AIR CLEANER BACK COVER
5-5	SP-D400-I05-5-LE	CAJA FILTRO AIRE SIN FILTRO	AIR FILTER CASE (NO FILTER)
5	SP-D400-I05-SE	TAPA TRASERA CAJA FILTRO AIRE	AIR CLEANER FRONT COVER
5-1	SP-D400-I05-1-SE	JUNTA GOMA CARCASA TRASERA FILTRO AIRE	AIR CLEANER FRONT RUBBER
5-2	SP-D400-I05-2-SE	JUNTA GOMA CIERRE CAJA FILTRO DE AIRE	AIR CLEANER JOINT
5-3	SP-D400-I05-3-SE	JUNTA GOMA TAPA FILTRO AIRE	AIR CLEANER BACK RUBBER
5-4	SP-D400-I05-4-SE	TAPA DELANTERA DEL FILTRO DE AIRE	AIR CLEANER BACK COVER
5-5	SP-D400-I05-5-SE	CAJA FILTRO AIRE SIN FILTRO	AIR FILTER CASE (NO FILTER)
5	SP-D500-I05-LE	TAPA TRASERA CAJA FILTRO AIRE	AIR CLEANER FRONT COVER
5-1	SP-D500-I05-1-LE	JUNTA GOMA CARCASA TRASERA FILTRO AIRE	AIR CLEANER FRONT RUBBER
5-2	SP-D500-I05-2-LE	JUNTA GOMA CIERRE CAJA FILTRO DE AIRE	AIR CLEANER JOINT
5-3	SP-D500-I05-3-LE	JUNTA GOMA TAPA FILTRO AIRE	AIR CLEANER BACK RUBBER
5-4	SP-D500-I05-4-LE	TAPA DELANTERA DEL FILTRO DE AIRE	AIR CLEANER BACK COVER
5-5	SP-D500-I05-5-LE	CAJA FILTRO AIRE SIN FILTRO	AIR FILTER CASE (NO FILTER)
5	SP-D500-I05-SE	TAPA TRASERA CAJA FILTRO AIRE	AIR CLEANER FRONT COVER
5-1	SP-D500-I05-1-SE	JUNTA GOMA CARCASA TRASERA FILTRO AIRE	AIR CLEANER FRONT RUBBER
5-2	SP-D500-I05-2-SE	JUNTA GOMA CIERRE CAJA FILTRO DE AIRE	AIR CLEANER JOINT
5-3	SP-D500-I05-3-SE	JUNTA GOMA TAPA FILTRO AIRE	AIR CLEANER BACK RUBBER
5-4	SP-D500-I05-4-SE	TAPA DELANTERA DEL FILTRO DE AIRE	AIR CLEANER BACK COVER
5-5	SP-D500-I05-5-SE	CAJA FILTRO AIRE SIN FILTRO	AIR FILTER CASE (NO FILTER)
6	SP-D400-I06	TORNILLO DOBLE M6X75	BOLT M6X75
7	SP-D400-I07	PRE-CALENTADOR 12V	12V HEATING PLUG
7-1	SP-D400-I07-1	TORNILLO HEXAGONAL INTERNO	HEXAGONAL INTERNAL SCREW PLUG
8	SP-D400-I08	TORNILLO CIERRE CARCASA	BACK SCREW

FAST MOVING PARTS

RECOMMENDED PARTS



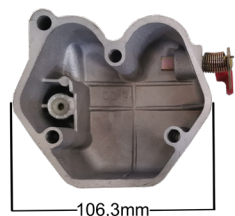
Nº	REF.	DESCRIPCIÓN (ES)	DESCRIPTION (EN)
1	SP-D400-J01	TORNILLO M6 x 70	BOLT M6x70
2	SP-D400-J02	TAPA VALVULAS (MOTORES, GENERADORES)	CYLINDER HEAD COVER ASSY(ENGINE, GENERATOR)
2-1	SP-D400-J02-1	TAPA VALVULAS (MOTO BOMBA)	CYLINDER HEAD COVER ASSY(PUMP SET)
2-2	SP-D500-J02-2	TAPA VALVULAS (GENERADOR)	CYLINDER HEAD COVER ASSY (GENERATOR SET)
3	SP-D400-J03	JUNTA TAPA VALVULAS	CYLINDER HEAD COVER GASKET
3-1	SP-D500-J03-1	JUNTA TAPA VALVULAS	CYLINDER HEAD COVER GASKET



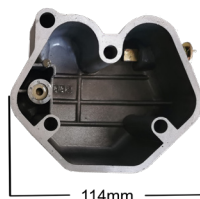
SP-D400-J02



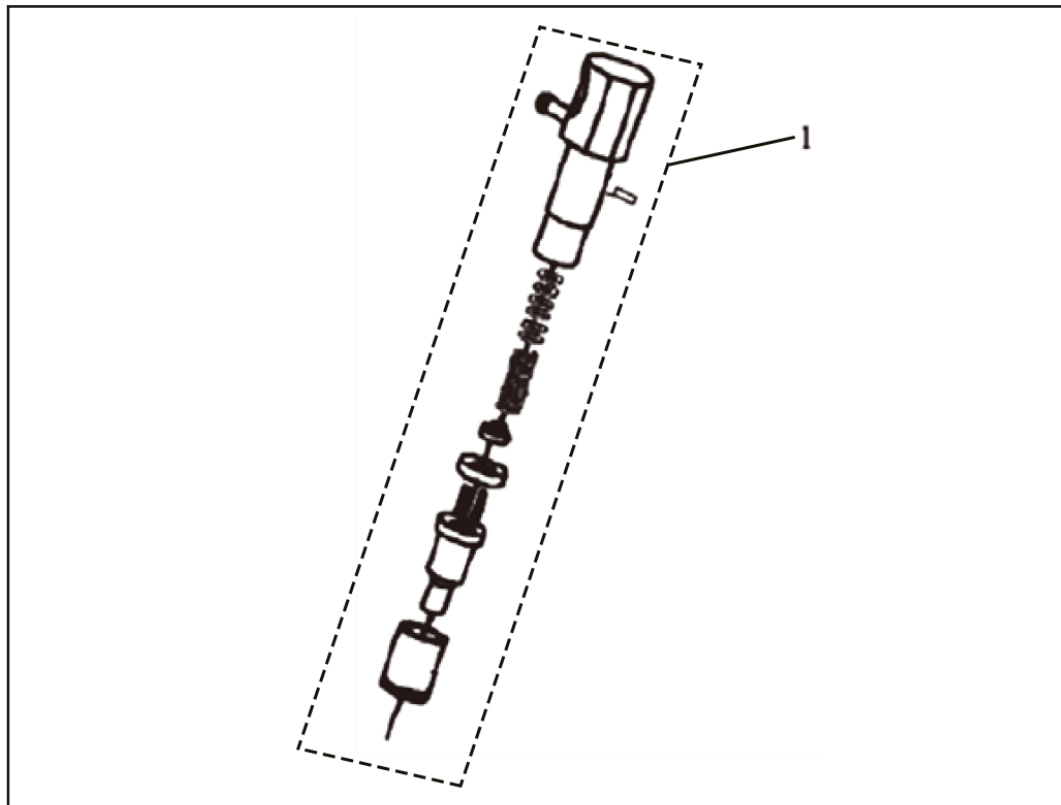
SP-D400-J02-1



SP-D400-J02



SP-D500-J02-2



Nº	REF.	DESCRIPCIÓN (ES)	DESCRIPTION (EN)
1	SP-D400-K01	INYECTOR CONJUNTO	INJECTOR ASSY
1-1	SP-D400-K01-1	INYECTOR CONJUNTO MODELO NO FA	INJECTOR ASSY NO FA
1-2	SP-D450-K01-1	INYECTOR CONJUNTO	INJECTOR ASSY
1-3	SP-D500-K01-2	INYECTOR CONJUNTO	INJECTOR ASSY

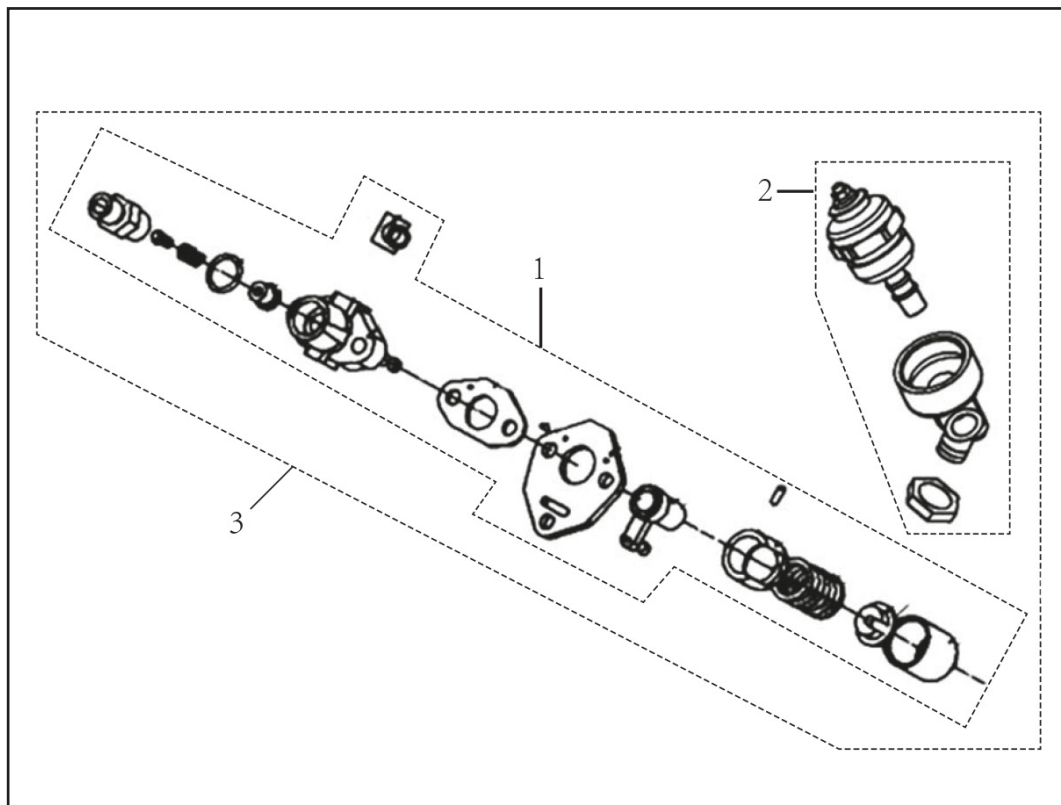


SP-D400-K01



SP-D450-K01-1

SP-D500-K01-2



Nº	REF.	DESCRIPCIÓN (ES)	DESCRIPTION (EN)
1	SP-D400-L01	BOMBA INYECCION (SIN ELECTRO VALVULA) PARA MOTOBOMBAS	INJECTION PUMP ASSY
2	SP-D400-L02	VALVULA ELECTROMAGNETICA	ELECTROMAGNETIC VALVE
3	SP-D400-L03	BOMBA INYECCION CON ELECTRO VALVULA	INJECTION PUMP ASSY(ELECTROMAGNETIC VALVE INCLUDED)
3-1	SP-D450-L03-1	BOMBA INYECCION CON ELECTRO VALVULA	INJECTION PUMP ASSY(ELECTROMAGNETIC VALVE INCLUDED)
3-2	SP-D500-L03-2	BOMBA INYECCION CON ELECTRO VALVULA	INJECTION PUMP ASSY(ELECTROMAGNETIC VALVE INCLUDED)



SP-D400-L02



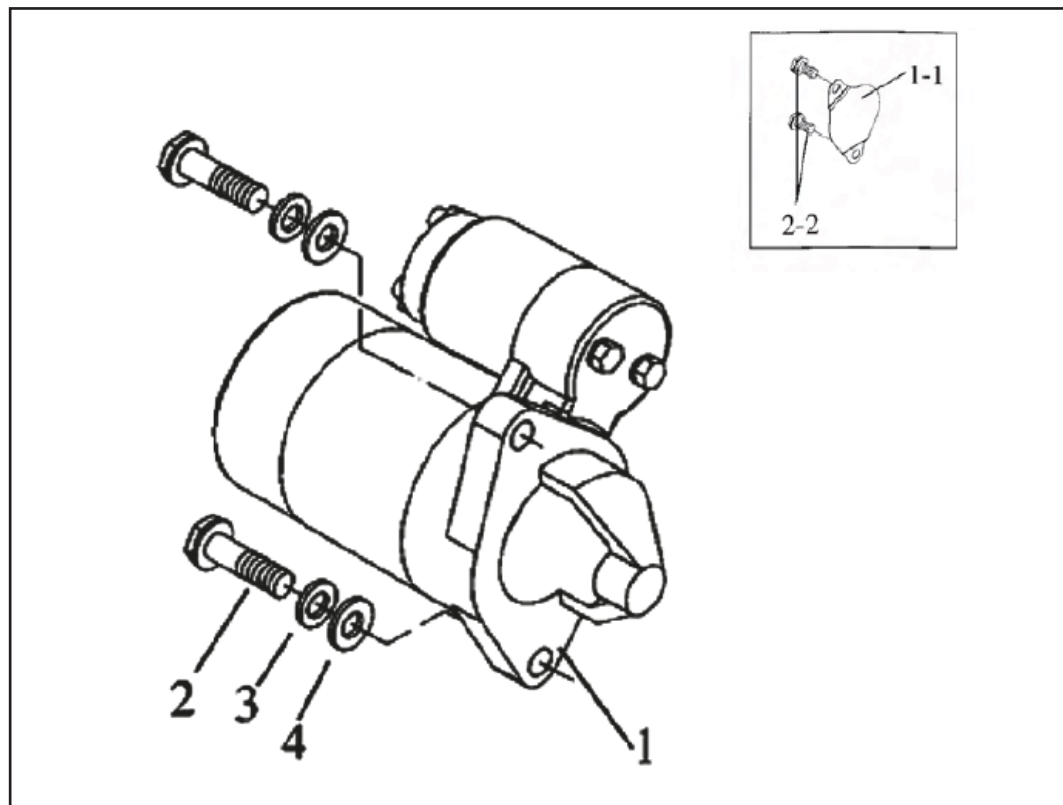
SP-D400-L03



SP-D500-L03-2

FAST MOVING PARTS

RECOMMENDED PARTS



Nº	REF.	DESCRIPCIÓN (ES)	DESCRIPTION (EN)
1	SP-D400-M01	MOTOR DE ARRANQUE D400/450/500	STARTING MOTOR ASSY
1-1	SP-D400-M01-1	MOTOR DE ARRANQUE LE	STARTING MOTOR
2	SP-D400-M02	TORNILLO M10×35	BOLT M10×35
2-1	SP-D400-M02-1	TORNILLO M10×20	BOLT M10×20
3	SP-D400-M03	JUNTA DE MUELLE Ø10	SPRING GASKET Ø10
4	SP-D400-M04	ARANDELA PLANA Ø10	FLAT WASHER Ø10
5	SP-D400-M05	RELE MOTOR ARRANQUE 60A	STARTER ENGINE RELAY 60A
5-1	SP-D400-M05-1	RELE MOTOR ARRANQUE 80A	STARTER ENGINE RELAY 80A
6	SP-D400-M06	PORTAFUSIBLES CONJUNTO	FUSE HOLDER ASSY



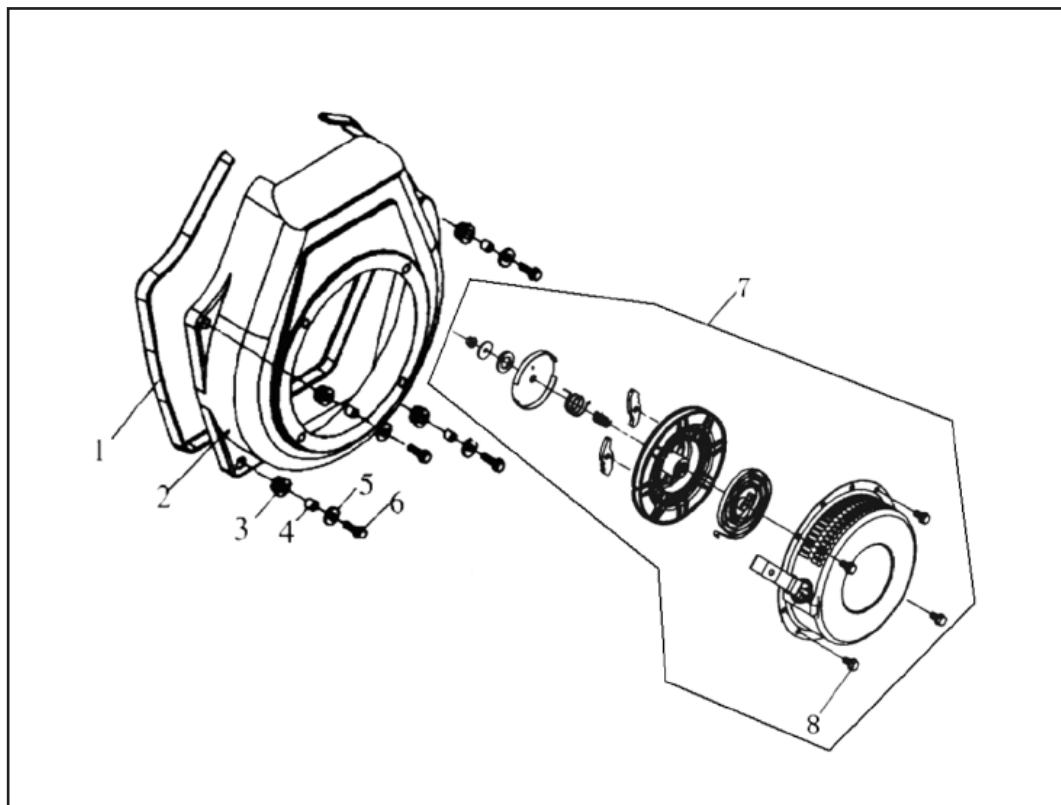
SP-D400-M01



SP-D400-M05



SP-D400-M06



Nº	REF.	DESCRIPCIÓN (ES)	DESCRIPTION (EN)
1	SP-D400-N01	GOMA PROTECCION CARCASA	CUSHION
2	SP-D400-N02	CUBIERTA VOLANTE DE INERCIA (MODELO LE)	FAN COVER WELDMNT ASSY (OPEN FRAME TYPE)
2-1	SP-D400-N02-1	CUBIERTA VOLANTE DE INERCIA (MODELO SE)	FAN COVER WELDMNT ASSY (SOUNDPROOF TYPE)
2-2	SP-D450-N02-2	CUBIERTA VOLANTE DE INERCIA (MODELO LE)	FAN COVER WELDMNT ASSY (OPEN FRAME TYPE)
2-3	SP-D450-N02-3	CUBIERTA VOLANTE DE INERCIA (MODELO SE)	FAN COVER WELDMNT ASSY (SOUNDPROOF TYPE)
2-4	SP-D500-N02-4	CUBIERTA VOLANTE DE INERCIA (MODELO LE)	FAN COVER WELDMNT ASSY (OPEN FRAME TYPE)
2-5	SP-D500-N02-5	CUBIERTA VOLANTE DE INERCIA (MODELO SE)	FAN COVER WELDMNT ASSY (SOUNDPROOF TYPE)
3	SP-D400-N03	GOMA ANTIVIBRACION	CUSHION SHEATH
4	SP-D400-N04	CASQUILLO	SHEATH
5	SP-D400-N05	ARANDELA PLANA Ø6	FLAT WASHER Ø6
6	SP-D400-N06	TORNILLO M6 x 22	BOLT M6x22
7	SP-D400-N07	ARRANCADOR MANUAL COMPLETO	STARTER ASSY
8	SP-D400-N08	TORNILLO M6X8	SCREW M6X8



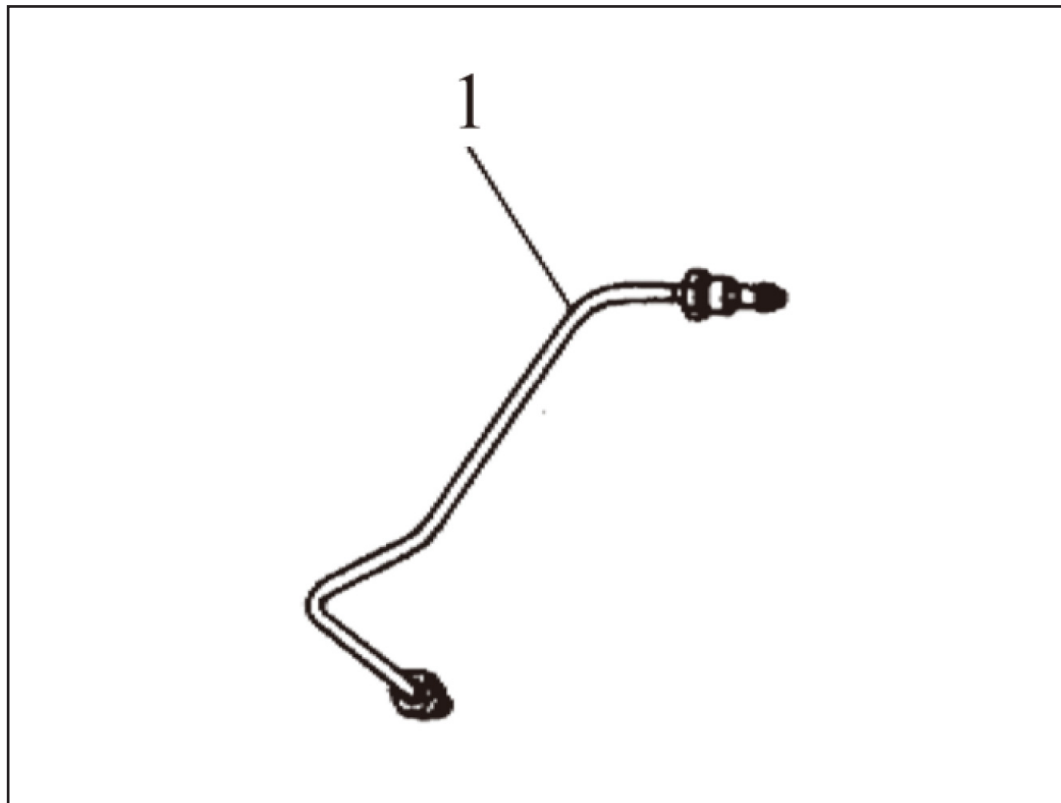
SP-D450-N02-2



SP-D450-N02-3



SP-D400-N07



Nº	REF.	DESCRIPCIÓN (ES)	DESCRIPTION (EN)
1	SP-D400-001	TUBO DE ALTA PRESION (MODELO LE)	HIGH-PRESSURE TUBE (OPEN FRAME TYPE)
1-1	SP-D400-001-1	TUBO DE ALTA PRESION (MODELO SE)	HIGH-PRESSURE TUBE(SOUNDPROOF TYPE)
1	SP-D450-001	TUBO DE ALTA PRESION (MODELO LE)	HIGH-PRESSURE TUBE (OPEN FRAME TYPE)
1-1	SP-D450-001-1	TUBO DE ALTA PRESION (MODELO SE)	HIGH-PRESSURE TUBE(SOUNDPROOF TYPE)



SP-D400-001



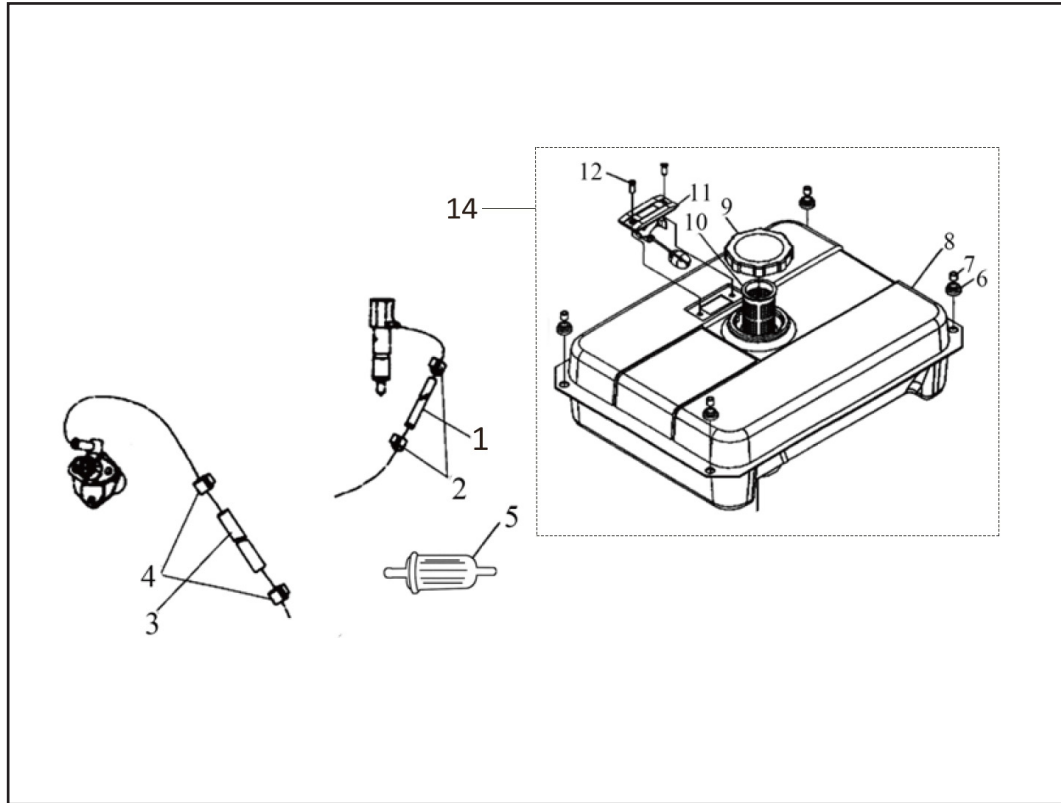
SP-D400-001-1



SP-D450-001



SP-D450-001-1



Nº	REF.	DESCRIPCIÓN (ES)	DESCRIPTION (EN)
1	SP-D400-R01	TUBO DE RETORNO DE COMBUSTIBLE Ø5×9.5	FUEL RETURN PIPE Ø5×9.5
2	SP-D400-R02	ABRAZADERA TUBO DE RETORNO DE COMBUSTIBLE Ø9	FUEL RETURN PIPE CLIP Ø9
3	SP-D400-R03	TUBO DE COMBUSTIBLE Ø7.5 × 13	FUEL PIPE Ø7.5×13
4	SP-D400-R04	ABRAZADERA TUBO DE COMBUSTIBLE Ø11, Ø13 (OPCIONAL)	FUEL PIPE CLIP Ø11, Ø13 AS OPTIONAL
5	SP-D400-R05	FILTRO DE COMBUSTIBLE EXTERNO	EXTERNAL FUEL FILTER
5-1	SP-D400-R05-1	FILTRO COMBUSTIBLE ANTIGUO (VASO)	
6	SP-D400-R06	GOMAS ANTIVIBRACION DEPOSITO	VIBRATION ISOLATION CUSHION BLOCK
7	SP-D400-R07	CASQUILLO	SHEATH
8	SP-D400-R08	DEPOSITO DE COMBUSTIBLE (TIPO ABIERTO)	FUEL TANK (OPEN FRAME TYPE)
8-1	SP-D400-R08-1	DEPOSITO DE COMBUSTIBLE (TIPO INSONORIZADO)	FUEL TANK (SOUNDPROOF TYPE)
8-2	SP-D500-R08-2	DEPOSITO DE COMBUSTIBLE (6600SE-LRS)	FUEL TANK (6600SE-LRS)
9	SP-D400-R09	TAPON COMBUSTIBLE	FUEL TANK CAP
10	SP-D400-R10	PRE FILTRO COMBUSTIBLE	FUEL FILLER SCREEN
11	SP-D400-R11	INDICADOR NIVEL DE COMBUSTIBLE (TIPO ABIERTO)	FUEL LEVEL INDICATOR ASSY (OPEN FRAME TYPE)
11-1	SP-D400-R11-1	INDICADOR NIVEL DE COMBUSTIBLE (TIPO INSONORIZADO)	FUEL LEVEL INDICATOR ASSY (SOUNDPROOF TYPE)
12	SP-D400-R12	TORNILLO M5 × 8	SCREW M5×8
13	SP-D400-R13	TAPA SUPERIOR	UPPER COVER
14	SP-D400-R14	DEPOSITO DE COMBUSTIBLE (TIPO ABIERTO). CONJUNTO COMPLETO	FUEL TANK (OPEN FRAME TYPE) COMPLETE ASSY
15	SP-D400-R15	TAPA GOMA DESCOMPRESOR	DECOMPRESSOR RUBBER COVER



SP-D400-R05



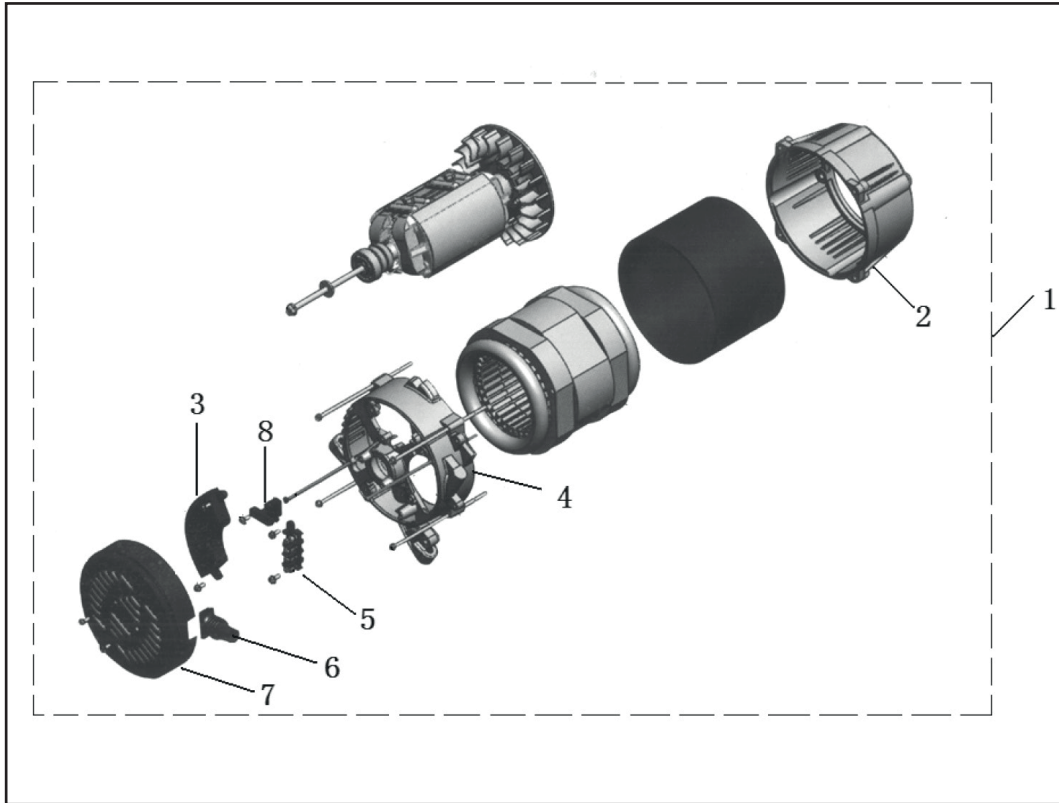
SP-D400-R08



SP-D400-R08-1



SP-D400-R15



Nº	REF.	DESCRIPCIÓN (ES)	DESCRIPTION (EN)
1	SP-ALT-5	ALTERNADOR 5 KW MONOFASICO	5 KW MONOPHASE ALTERNATOR
1-1	SP-ALT-5-3	ALTERNADOR 5 KW TRIFASICO	5 KW THREE PHASE ALTERNATOR
1-2	SP-ALT-5-C	ALTERNADOR 5 KW MONOFASICO CORTOS	5 KW SHORT MONOPHASE ALTERNATOR
1-3	SP-ALT-5-LRS	ALTERNADOR 5 KW MONOFASICO PARA DHY6600SE-LRS	5 KW MONOPHASE ALTERNATOR FOR DHY6600SE-LRS
1-4	SP-ALT-6	ALTERNADOR 6 KW MONOFASICO	6 KW MONOPHASE ALTERNATOR
1-5	SP-ALT-6-3	ALTERNADOR 6 KW TRIFASICO	6 KW THREE PHASE ALTERNATOR
1-6	SP-ALT-6-3-230V	ALTERNADOR 6 KW TRIFASICO A 230V	6 KW 230 V THREE PHASE ALTERNATOR
2	SP-D400-S02	CUBIERTA DELANTERA (LE/LE-3) (TIPO ABIERTO)	FRONT ROUND COVER (LE/LE-3) (OPEN TYPE)
2-1	SP-D400-S02-1	CUBIERTA DELANTERA (SE/SE-3) (TIPO INSONORIZADO)	FRONT ROUND COVER (SE/SE-3) (SOUNDPROOF TYPE)
2-2	SP-D500-S02-2	CUBIERTA DELANTERA Ø204 ENCAJE 5MM (LE)	FRONT COVER Ø204 LACE 5MM (LE)
2-3	SP-D500-S02-3	CUBIERTA DELANTERA Ø204 ENCAJE 5MM (SE)	FRONT COVER Ø204 LACE 5MM (SE)
3	SP-ALT-AVR-5	AVR 5/6KW MONOFASICO	AVR 5/6KW MONOPHASE
3-1	SP-ALT-AVR-5-2C	AVR 5/6KW TRIFASICO DE 2 CONECTORES-8 CABLES	AVR 5/6KW THREE PHASE 2 CONNECT- 8 CABLES
3-2	SP-ALT-AVR-5-2C-7C	AVR 5/6KW TRIFASICO DE 2 CONECTORES-7 CABLES	AVR 5/6KW THREE PHASE 2 CONNECT- 7 CABLES
3-3	SP-ALT-AVR-5-SE	AVR 5/6KW MONOFASICO SILENCIOSOS	AVR 5/6KW MONOPHASE SOUNDPROOF
3-4	SP-ALT-AVR-5-SE-3	AVR 5/6KW TRIFASICO SILENCIOSOS	AVR 5/6KW THREE PHASE SOUNDPROOF
4	SP-D400-S04	TAPA TRASERA Ø190 ENCAJE 3MM	REAR COVER Ø190 LACE 3MM
4-1	SP-D400-S04-1	TAPA TRASERA Ø190 ENCAJE 6MM	REAR COVER Ø190 LACE 6MM
4-2	SP-D500-S04-2	TAPA TRASERA Ø204 ENCAJE 5MM	REAR COVER Ø204 LACE 5MM
5	SP-D400-S05	PLACA TERMINAL	TERMINAL PLATE
6	SP-D400-S06	CUBIERTA DEL CABLE DE GOMA	RUBBER CABLE COVER
7	SP-D400-S07	CUBIERTA TRASERA	REAR END COVER
8	SP-ALT-ESC-5	ESCOBILLAS	BRUSH KIT



SP-D400-S02



SP-ALT-ESC-5



SP-ALT-AVR-5



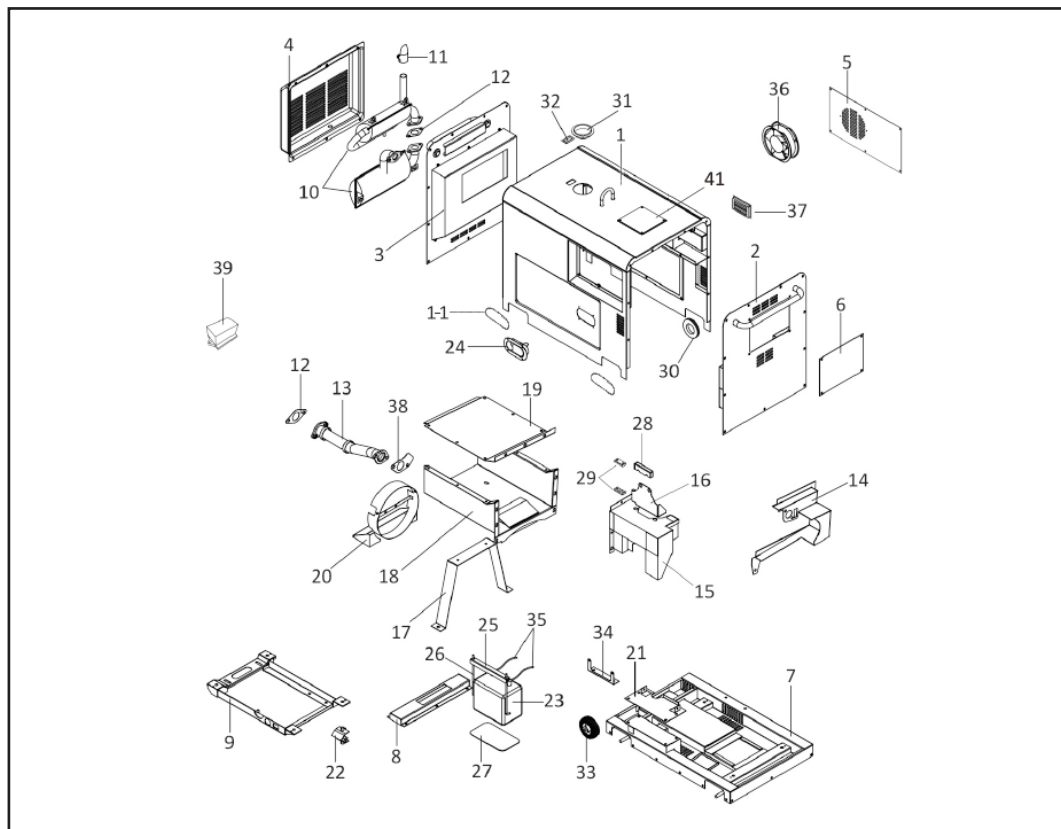
SP-ALT-AVR-5-2C



SP-D500-S04-2

FAST MOVING PARTS

RECOMMENDED PARTS



SP-D400-U01-1



SP-D400-U04



SP-D400-U04-1



SP-D400-U42



SP-D400-U33



SP-D400-U36



SP-D400-U39

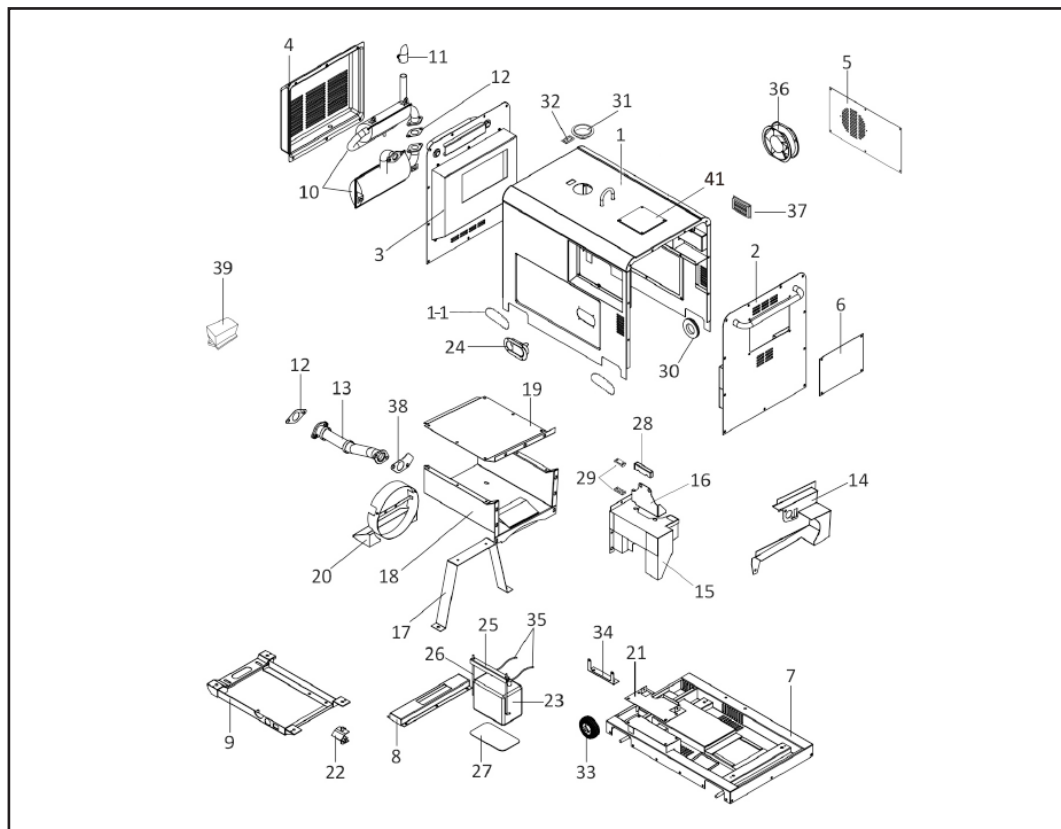


SP-D400-U40

FAST MOVING PARTS

RECOMMENDED PARTS

Nº	REF.	DESCRIPCIÓN (ES)	DESCRIPTION (EN)
1	SP-D400-U01	CARCASA CARROCERIA SE	CANOPY UPPER COVER
1-1	SP-D400-U01-1	TAPA PROTECTOR RUEDAS	WHEEL COVER
2	SP-D400-U02	TAPA DERECHA	RIGHT COVER
3	SP-D400-U03	TAPA IZQUIERDA	LEFT COVER
4	SP-D400-U04	TAPA SILENCIADOR ESCAPE SE	MUFFLER COVER
4-1	SP-D400-U04-1	TAPA SILENCIADOR ESCAPE SE	MUFFLER COVER
5	SP-D400-U05	TAPA LATERAL DE ACCESO	REAL DOOR
5-1	SP-D450-U05-1	TAPA LATERAL DE ACCESO CON REJILLA PARA VENTILAR	REAL DOOR (WITH FAN HOLE)
6	SP-D400-U06	TAPA ACCESO FILTRO AIRE	AIR FILTER DOOR
7	SP-D400-U07	BASE CARROCERIA SE	BASE CHASSIS
8	SP-D400-U08	SOPORTE PARTE TRASERA ALTERNADOR	BASE CHASSIS REAL COVER
9	SP-D400-U09	BASE SOPORTE MOTOR	ENGINE SUPPORT
10	SP-D400-U10	SILENCIADOR ESCAPE COMPLETO SE Ø38	MUFFLER ASSY
10-1	SP-D500-U10-1	SILENCIADOR ESCAPE COMPLETO SE Ø35	MUFFLER ASSY
11	SP-D400-U11	SALIDA ESCAPE DIRECCIONAL	MUFFLER END PIPE
12	SP-D400-U12	JUNTA SILENCIADORES ESCAPE	MUFFLER GASKET
12-1	SP-D500-U12-1	JUNTA SILENCIADORES ESCAPE	MUFFLER GASKET
13	SP-D400-U13	TOBERA FLEXIBLE ESCAPE	BELLOWS
13-1	SP-D500-U13-1	TOBERA FLEXIBLE ESCAPE	BELLOWS
14	SP-D400-U14	PLANCHAS INTERNAS 1	INSIDE PART 1
14-1	SP-D500-U14-1	PLANCHAS INTERNAS 1-1	INSIDE PART 1-1
15	SP-D400-U15	PLANCHAS INTERNAS 2	INSIDE PART 2
15-1	SP-D500-U15-1	PLANCHAS INTERNAS 2-1	INSIDE PART 2-1
16	SP-D400-U16	SOPORTE MOTOR	INSIDE PART 3
17	SP-D400-U17	PLANCHAS INTERNAS 4	INSIDE PART 4
18	SP-D400-U18	PLANCHAS INTERNAS 5	INSIDE PART 5
19	SP-D400-U19	PLANCHAS INTERNAS 6	INSIDE PART 6
20	SP-D400-U20	PLANCHAS INTERNAS 7	INSIDE PART 7
20-1	SP-D400-U20-1	PLANCHAS INTERNAS 7-1	INSIDE PART 7-1
20-2	SP-D400-U20-2	PLANCHAS INTERNAS 7-2	INSIDE PART 7-2
20-3	SP-D400-U20-3	PLANCHAS INTERNAS 7-3	INSIDE PART 7-3
21	SP-D400-U21	BASE METALICA BATERIA	INSIDE PART 8
22	SP-D400-U22	SILENT BLOCKS	RUBBER ABSORBER
24	SP-D400-U24	MANETA PUERTA ACCESO	FRONT DOOR HANDLE
25	SP-D400-U25	FIJACION BATERIA	BATTERY FASTENING PLATE
26	SP-D400-U26	JUEGO VARILLAS FIJACION BATERIA	BATTERY FASTENING ROD
27	SP-D400-U27	CAUCHO BASE BATERIA	BATTERY RUBBER BASE PLATER
28	SP-D400-U28	JUNTA SILENCIADORES ESCAPE	MUFFLER GASKET 1
29	SP-D400-U29	FIJADOR TUBO PRESION	HIGH PRESSURE PIPE CLIP
30	SP-D400-U30	GOMA CAJA FILTRO AIRE	RUBBER ROUND COVER FOR AIR INLET PIPE
31	SP-D400-U31	GOMA BOCA DEPOSITO	RUBBER ROUND COVER FOR FUEL TANK



Nº	REF.	DESCRIPCIÓN (ES)	DESCRIPTION (EN)
32	SP-D400-U32	VISOR EXTERNO NIVEL COMBUSTIBLE	FUEL TANK INDICATOR DOOR
33	SP-D400-U33	RUEDAS MODELO SE	4 INCH WHEEL
34	SP-D400-U34	SOPORTE AVR	AVR SUPPORT
35	SP-D400-U35	JUEGO CABLES BATERIA	BATTERY CABLE (BOTH OF RED AND BLACK)
36	SP-D400-U36	VENTILADOR 35W 220V	35W ELECTRIC FAN
37	SP-D400-U37	REJILLA ADMISION AIRE	BLIND
38	SP-D400-U38	JUNTA SILENCIADORES ESCAPE	MUFFLER GASKET 2
38-1	SP-D500-U38-1	JUNTA SILENCIADORES ESCAPE	MUFFLER GASKET 2
39	SP-D400-U39	CAJA PORTA FUSIBLES	FUSE HOLDER BOX
40	SP-D400-U40	PLACA ACCESO DEPOSITO	TANK ACCESS PLATE
41	SP-D400-U41	TAPA ACCESO DESCOMPRESOR	DECOMPRESSOR ACCESS COVER
42	SP-D400-U42	SILENCIADOR ESCPAE COMPLETO	MUFFLER ASSY
42-1	SP-D500-U42-1	SILENCIADOR ESCAPE COMPLETO	MUFFLER ASSY
43	SP-D400-U43	CATALIZADOR	CATALYST



SP-D400-U01-1



SP-D400-U04



SP-D400-U04-1



SP-D400-U42



SP-D400-U33



SP-D400-U36



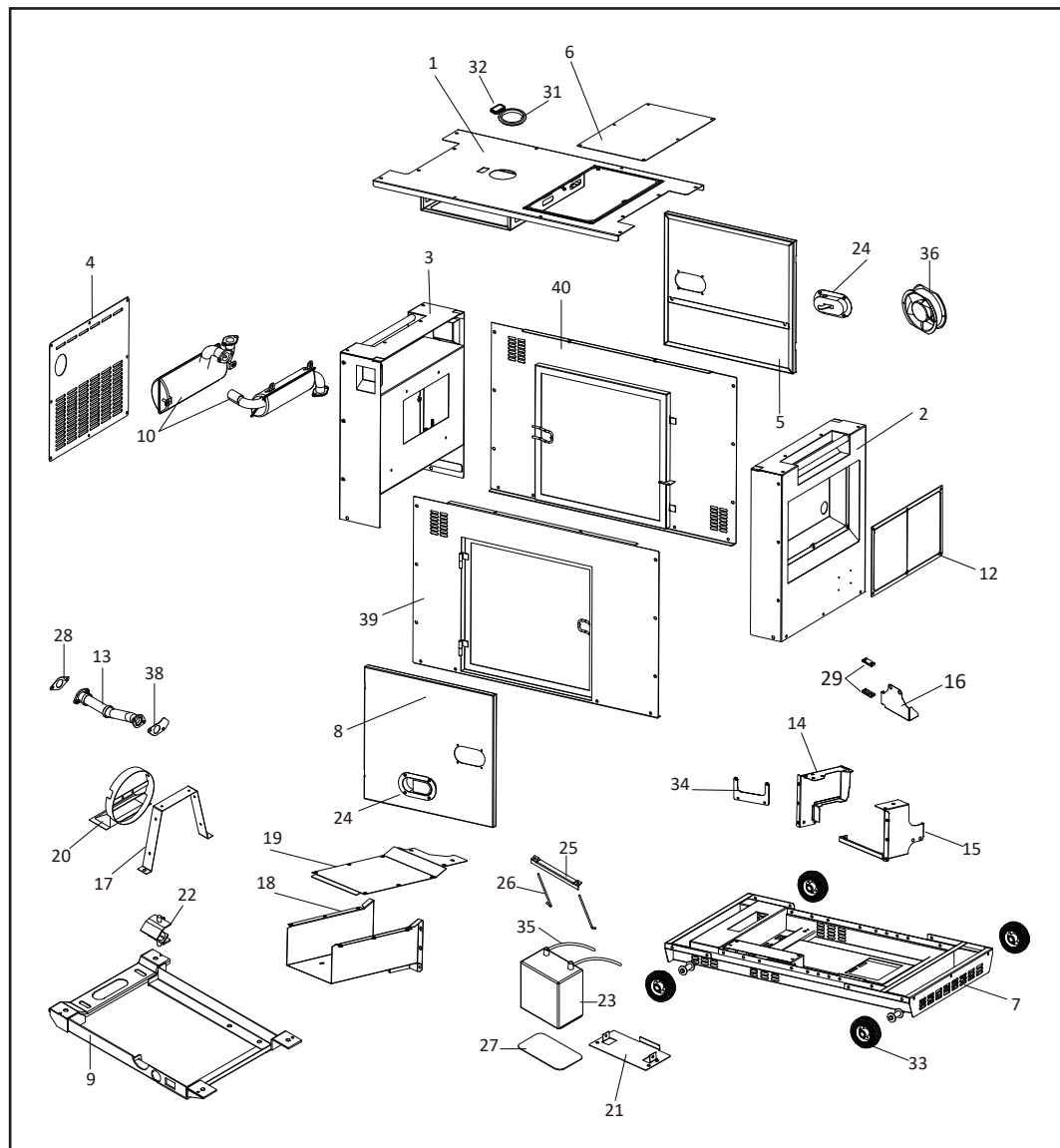
SP-D400-U39



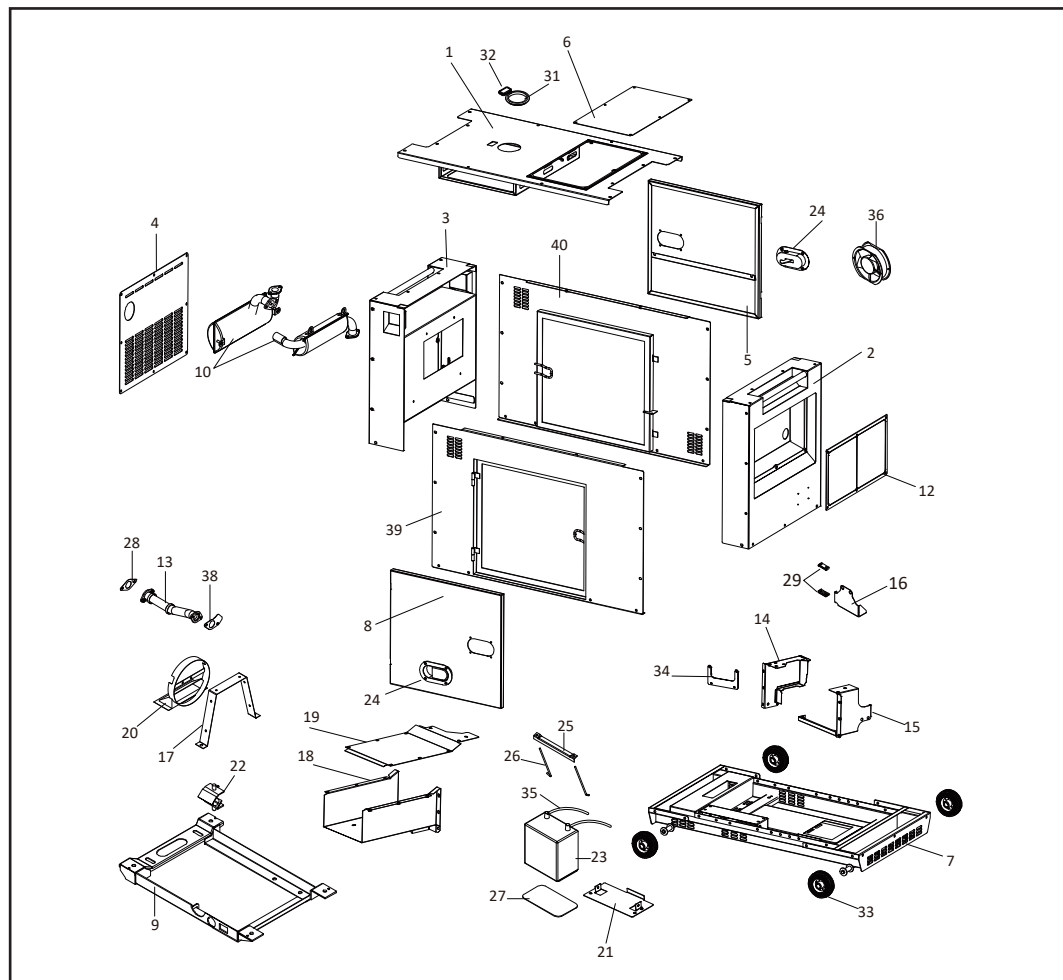
SP-D400-U40

FAST MOVING PARTS

RECOMMENDED PARTS



Nº	REF.	DESCRIPCIÓN (ES)	DESCRIPTION (EN)
1	SP-D400-W01-BD	TECHO CARROCERIA B+D	ROOF B+D
2	SP-D400-W02-BD	TAPA DERECHA B+D	RIGHT COVER B+D
3	SP-D400-W03-BD	TAPA IZQUIERDA B+D	LEFT COVER B+D
4	SP-D400-W04-BD	TAPA SILENCIADOR ESCAPE B+D	MUFFLER COVER B+D
5	SP-D400-W05-BD	TAPA LATERAL DE ACCESO B+D	REAL DOOR B+D
5-1	SP-D450-W05-1-BD	TAPA LATERAL DE ACCESO REJILLA VENTILADOR B+D	REAL DOOR (WITH FAN HOLE) B+D
6	SP-D400-W06-BD	TAPA ACCESO FILTRO AIRE B+D	AIR FILTER DOOR B+D
7	SP-D400-W07	BASE CARROCERIA SE	BASE CHASSIS
8	SP-D400-W08-BD	PUERTA MANTENIMIENTO 8600 B+D	MAINTENANCE DOOR 8600 B+D
9	SP-D400-W09	BASE SOPORTE MOTOR	ENGINE SUPPORT
10	SP-D400-W10	SILENCIADOR ESCAPE COMPLETO SE	MUFFLER ASSY
10-1	SP-D500-W10-1	SILENCIADOR ESCAPE COMPLETO SE	MUFFLER ASSY
11	SP-D400-W11	BISAGRA	HINGE
12	SP-D400-W12-BD	PANEL DE CONTROL (MONOFASICO) B+D	CONTROL PANEL (SINGLE PHASE) B+D
12-1	SP-D500-W12-1-BD	PANEL DE CONTROL (TRIFASICO) B+D	CONTROL PANEL (THREE PHASE) B+D
12-2	SP-D500-W12-2-BD	PANEL DE CONTROL (FULL POWER) B+D	CONTROL PANEL (FULL POWER) B+D
13	SP-D400-U13	TOBERA FLEXIBLE ESCAPE	BELLOWS
13-1	SP-D500-U13-1	TOBERA FLEXIBLE ESCAPE	BELLOWS
14	SP-D400-U14	PLANCHAS INTERNAS 1	INSIDE PART 1
14-1	SP-D500-U14-1	PLANCHAS INTERNAS 1-1	INSIDE PART 1
15	SP-D400-U15	PLANCHAS INTERNAS 2	INSIDE PART 2
15-1	SP-D500-U15-1	PLANCHAS INTERNAS 2-1	INSIDE PART 2
16	SP-D400-U16	SOPORTE MOTOR	INSIDE PART 3
17	SP-D400-U17	PLANCHAS INTERNAS 4	INSIDE PART 4
18	SP-D400-U18	PLANCHAS INTERNAS 5	INSIDE PART 5
19	SP-D400-U19	PLANCHAS INTERNAS 6	INSIDE PART 6
20	SP-D400-U20	PLANCHAS INTERNAS 7	INSIDE PART 7
20-1	SP-D400-U20-1	PLANCHAS INTERNAS 7-1	INSIDE PART 7-1
20-2	SP-D400-U20-2	PLANCHAS INTERNAS 7-2	INSIDE PART 7-2
20-3	SP-D400-U20-3	PLANCHAS INTERNAS 7-3	INSIDE PART 7-3
21	SP-D400-U21	BASE METALICA BATERIA	INSIDE PART 8
22	SP-D400-U22	SILENT BLOCKS	RUBBER ABSORBER
23	SP-BAT-36	BATERIA	BATTERY
24	SP-D400-U24	MANETA PUERTA ACCESO	FRONT DOOR HANDLE
25	SP-D400-U25	FIJACION BATERIA	BATTERY FASTENING PLATE
26	SP-D400-U26	JUEGO VARILLAS FIJACION BATERIA	BATTERY FASTENING ROD
27	SP-D400-U27	CAUCHO BASE BATERIA	BATTERY RUBBER BASE PLATER
28	SP-D400-U28	JUNTA SILENCIADORES ESCAPE	MUFFLER GASKET 1
29	SP-D400-U29	FIJADOR TUBO PRESION	HIGH PRESSURE PIPE CLIP
30	SP-D400-U30	GOMA CAJA FILTRO AIRE	RUBBER ROUND COVER FOR AIR INLET PIPE



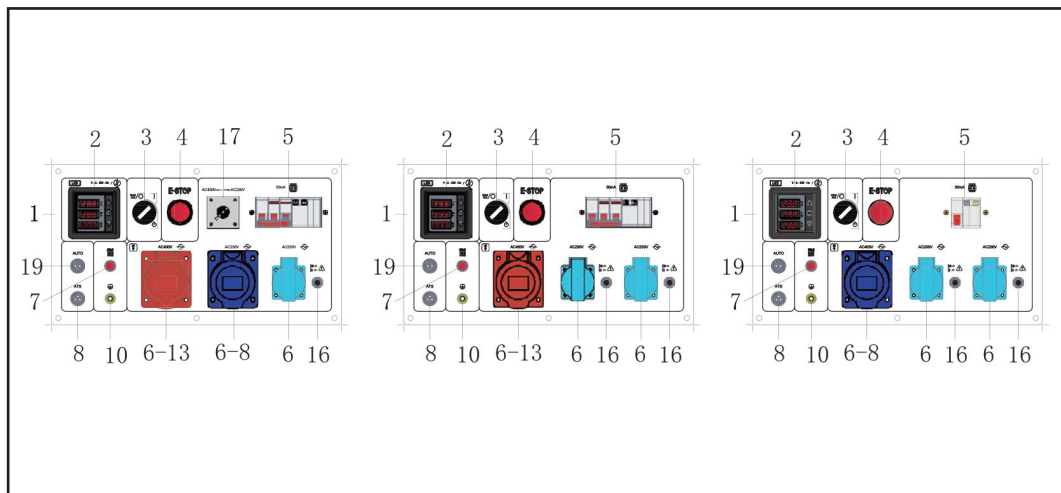
Nº	REF.	DESCRIPCIÓN (ES)	DESCRIPTION (EN)
31	SP-D400-U31	GOMA BOCA DEPOSITO	RUBBER ROUND COVER FOR FUEL TANK
32	SP-D400-U32	VISOR EXTERNO NIVEL COMBUSTIBLE	FUEL TANK INDICATOR DOOR
33	SP-D400-U33	RUEDAS MODELO SE	4 INCH WHEEL
24	SP-D400-U24	MANETA PUERTA ACCESO	FRONT DOOR HANDLE
25	SP-D400-U25	FIJACION BATERIA	BATTERY FASTENING PLATE
26	SP-D400-U26	JUEGO VARILLAS FIJACION BATERIA	BATTERY FASTENING ROD
27	SP-D400-U27	CAUCHO BASE BATERIA	BATTERY RUBBER BASE PLATER
28	SP-D400-U28	JUNTA SILENCIADORES ESCAPE	MUFFLER GASKET 1
29	SP-D400-U29	FIJADOR TUBO PRESION	HIGH PRESSURE PIPE CLIP
30	SP-D400-U30	GOMA CAJA FILTRO AIRE	RUBBER ROUND COVER FOR AIR INLET PIPE
31	SP-D400-U31	GOMA BOCA DEPOSITO	RUBBER ROUND COVER FOR FUEL TANK
32	SP-D400-U32	VISOR EXTERNO NIVEL COMBUSTIBLE	FUEL TANK INDICATOR DOOR
33	SP-D400-U33	RUEDAS MODELO SE	4 INCH WHEEL
38	SP-D400-U38	JUNTA SILENCIADORES ESCAPE	MUFFLER GASKET 2
38-1	SP-D500-U38-1	JUNTA SILENCIADORES ESCAPE	MUFFLER GASKET 2
39	SP-D400-W39-BD	TAPA FRONTAL B+D	CANOPY FRONT COVER B+D
40	SP-D400-W40-BD	TAPA TRASERA B+D	CANOPY BACK COVER B+D
42	SP-D400-U42	SILENCIADOR ESCPAE COMPLETO	MUFFLER ASSY
42-1	SP-D500-U42-1	SILENCIADOR ESCAPE COMPLETO	MUFFLER ASSY
43	SP-D400-U43	CATALIZADOR	CATALYST



SP-D400-U42

FAST MOVING PARTS

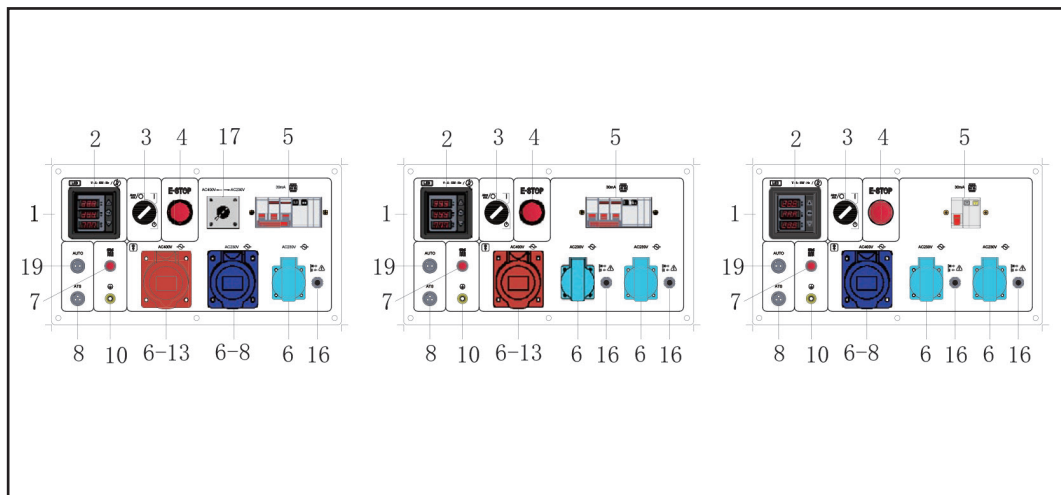
RECOMMENDED PARTS



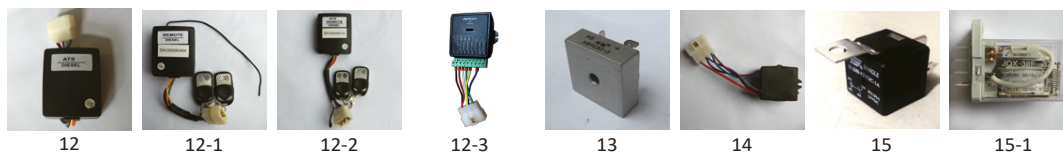
Nº	REF.	DESCRIPCIÓN (ES)	DESCRIPTION (EN)
1	SP-PC-PANEL-D500SE	PANEL DE CONTROL COMPLETO D500SE	CONTROL PANEL ASSY D500SE
1-1	SP-PC-PANEL-D500SET	PANEL DE CONTROL COMPLETO D500SET	CONTROL PANEL ASSY D500SET
2	SP-PC-LED5-1PH	LED5 DISPLAY (LE/SE) (MONOFASICO)	LED5 DISPLAY (LE/SE) (SINGLE PHASE)
2-1	SP-PC-LED5-3PH	LED5 DISPLAY (LE-3/SE-3) (3 PHASE)	LED5 DISPLAY (LE-3/SE-3) (3 PHASE)
2-2	SP-PC-LED5-FULL	LED5 DISPLAY (LET/SET) (FULL POWER)	LED5 DISPLAY (LET/SET) (FULL POWER)
2-3	SP-PC-LED6	PANTALLA LED 6	LED 6 DISPLAY
2-4	SP-PC-DC30D	PANTALLA DIGITAL DC30D	DIGITAL DISPLAY DC30D
2-5	SP-PC-TOROIDAL-LED6	TOROIDAL PANTALLA LED 6	TOROIDAL LED 6 DISPLAY
3	SP-PC-STARTER-D	BOMBIN DE ARRANQUE DIESEL	KEY STARTER DIESEL
4	SP-PC-STOP	PARO DE EMERGENCIA	E-STOP BUTTON
5		DIFERENCIAL 1P+N	LEAKAGE BREAKER 1P+N
5-1		DIFERENCIAL 3P+N	LEAKAGE BREAKER 3P+N
5-2		DIFERENCIAL NEGRO 1P	BLACK BREAKER 1P
5-3		DIFERENCIAL NEGRO 2P	BLACK BREAKER 2P
5-4		DIFERENCIAL NEGRO 3P	BLACK BREAKER 3P
5-5		DIFERENCIAL 1P	BREAKER 1P
6	SP-PC-BASE-SCH-16A-IP44	BASE SCHUKO 16A	EUROPE SOCKET 16A SCHUKO
6-1		BASE SCHUKO NEGRO AUSTRALIA 15 A	BLACK AUSTRALIA SOCKET 15A
6-2		BASE SCHUKO NEGRO ARGENTINA 15A	BLACK ARGENTINA SOCKET 15A
6-3		BASE SCHUKO AUSTRALIANA 15A IP67	IP67 AUSTRALIA SOCKET 15A
6-4		BASE SCHUKO AUSTRALIANA 32A IP67	IP67 AUSTRALIA SOCKET 32A
6-5		BASE SCHUKO AMARILLO 110-130V 16A	110-130V EUROPE YELLOW SOCKET 16A
6-6		BASE SCHUKO AMARILLO 110-130V 32A	110-130V EUROPE YELLOW SOCKET 32A
6-7		BASE SCHUKO AZUL 220-250V 16A	220-250V EUROPE BLUE SOCKET 16A
6-8		BASE SCHUKO AZUL 220-250V 32A	220-250V EUROPE BLUE SOCKET 32A
6-9		BASE SCHUKO AMERICANA 3 PINS 20A	AMERICAN THREE PINS SOCKET 20A
6-10		DOBLE BASE SCHUKO AMERICANA 20A	AMERICAN DOUBLE SOCKET 20A
6-11		BASE SCHUKO AMERICANA 4 PINS 30A	AMERICAN FOUR HOLES SOCKET 30A
6-12	SP-PC-BASE-SCH-32A-IP44	BASE SCHUKO INDUSTRIAL 3-P 32A	INDUSTRIAL FOUR HOLES SOCKET 3-PHASE 32A
6-13	SP-PC-BASE-SCH-16A-IP54	BASE SCHUKO INDUSTRIAL 3-P 16A	INDUSTRIAL FIVE HOLES SOCKET 3-PHASE 16A
6-14		BASE SCHUKO AUSTRALIANA 3 FASES 20A	IP67 AUSTRALIA SOCKET 3PHASE 20A
7	SP-PC-PRE-HEATER	PULSADOR PRECALENTADOR	AIR PRE-HEATER BUTTON
8	SP-PC-ATS-3	BASE CONECTOR 3 PINS ATS PARA 3000 rpm	3 PINS ATS SOCKET
9	SP-PC-CON-12V-T	CONECTOR TIPO T 12V / DC	T-TYPE 12V/DC CONNECTOR
10	SP-PC-CON-EARTH	TUERCA DE TIERRA	GROUNDING NUT
11	SP-PC-FUSE-8A	KIT DE FUSIBLES PANEL	FUSE KIT

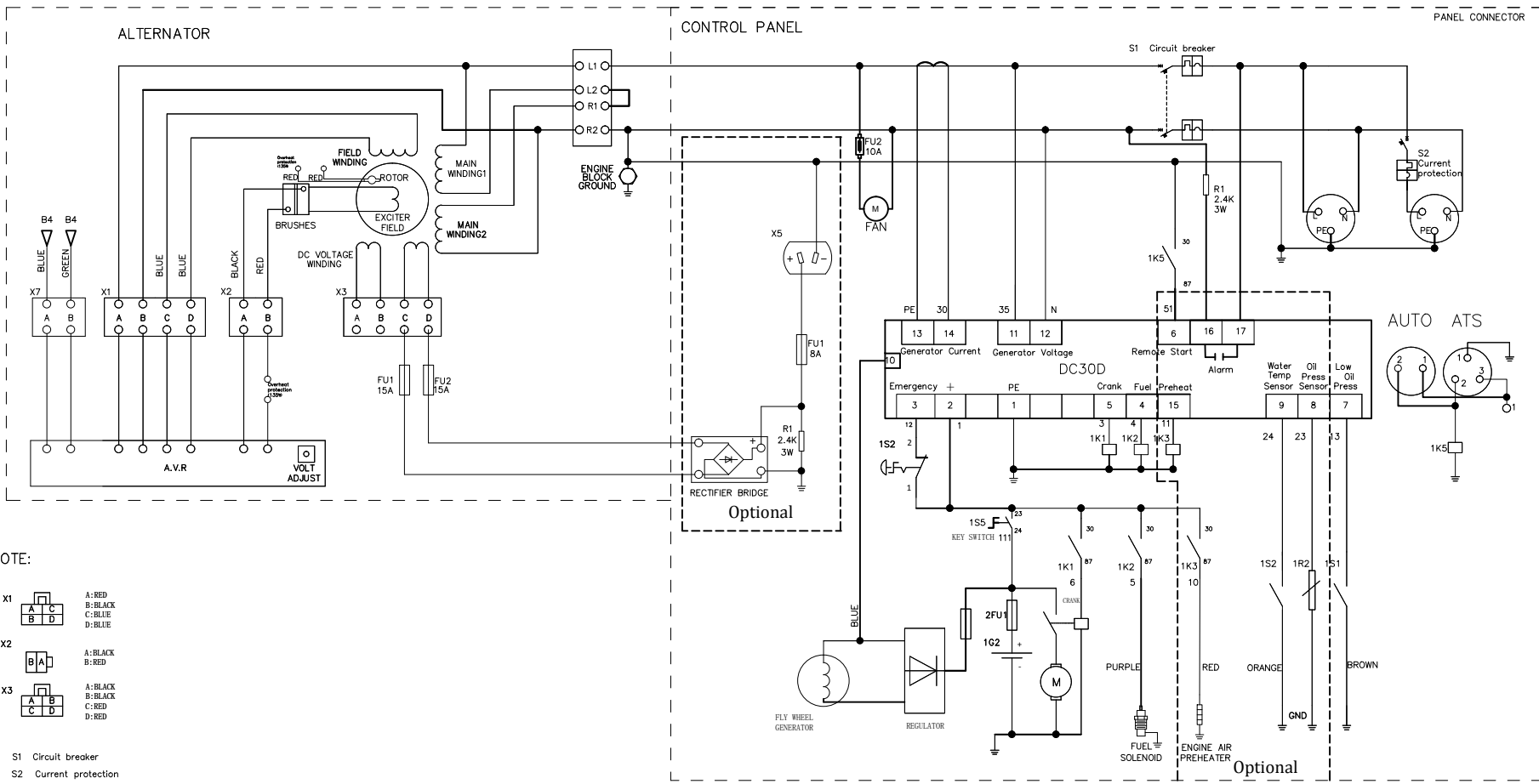
FAST MOVING PARTS

RECOMMENDED PARTS



Nº	REF.	DESCRIPCIÓN (ES)	DESCRIPTION (EN)
12	SP-PC-MODUL-ATS	MODULO ATS DIESEL	ATS MODULES
12-1	SP-PC-MODUL-R-D	MODULO REMOTE DIESEL	DIESEL REMOTE CONTROL MODULE
12-2	SP-PC-MODULO-ATS-R-D	MODULO ATS - REMOTE - DIESEL	DIESEL ATS + REMOTE CONTROL MODULE
12-3	SP-PC-MODUL-ATS-22	MODULO ATS DIESEL 2022	ATS DIESEL MODULE 2022
13	SP-PC-RECTI	RECTIFICADOR 12V	RECTIFIER 12V
14	SP-D400-V14	CAJA RELE	RELAY BOX
15	SP-D400-M05-1	RELE	RELAY
16	SP-PC-OVER-8A	PROTECTOR 12V 8A	OVERLOAD PROTECTOR 8A
16-1	SP-PC-OVER-14A	PROTECTOR 12V 14A	OVERLOAD PROTECTOR 14A
17	SP-PC-SELEC-T	INTERRUPTOR UNIVERSAL LW39B-16A D404.4	UNIVERSAL SWITCH LW39B-16A D404.4
18	SP-PC-OIL-LED	INDICADOR PRESION ACEITE	LOW OIL PRESSURE INDICATOR
19	SP-PC-ATS-2	BASE CONECTOR 2 PINS ATS PARA 3000 rpm	2 PINS ATS SOCKET





NOTE:

- X1

A	C
B	D

 A: RED
B: BLACK
C: BLUE
D: BLUE
 - X2

B	A
---	---

 A: BLACK
B: RED
 - X3

A	B
C	D

 A: BLACK
B: BLACK
C: RED
D: RED
- S1 Circuit breaker
S2 Current protection

SCALE: SCALE			MATERIAL:	QUANTITY:	WEIGHT:
2020			TITLE: DC30D		
DRAWN			USED ON:		
CHECKED			PART NO.:		
APPROVED			DWG NO.:		SIZE: A4
SIGN VARIATION NAME DATE			REV NO.:		SHEET:

THIS DOCUMENT IS THE PROPERTY OF ITC POWER GEN. LTD. IT CONTAINS PROPRIETARY AND CONFIDENTIAL INFORMATION WHICH MUST NOT BE DUPLICATED, USED OR DISCLOSED OTHER THAN AS EXPRESSLY AUTHORIZED BY ITC POWER GEN. LTD OR ITS REPRESENTATIVE