

PHILIPS

Service
Manual



Steam Iron

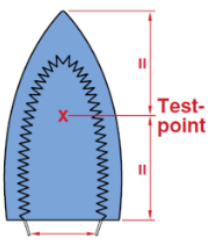
DST5010/10	DST5020/20	DST5020/21	DST5020/30	DST5021/20
DST5030/26	DST5030/30	DST5030/80	DST5031/30	DST5040/80
DST5040/86	DST5041/30			

Contents

	Page
1. Important Repair Instructions	3
2. Product Information	
- Functions/ Features Information	4
- Product Matrix	5
3. Troubleshooting Guide	7
4. Disassembly and Reassembly Instructions	8
5. Service Lists	12
6. Revision History	14

Important Repair Instructions

1. Only skilled personnel should carry out the repair.
2. Verification test to carry out as follows, to determine the problem:
 - a. Ensure product are properly assembled
 - b. Power on
 - c. Water Tank to be filled up to **Maximum** level
3. Refer to Troubleshooting guide for part repair/ replacement
4. After repaired, the appliance must function properly, following test to be carried out:
 - a. **Power-on check**
Powered ON with socket equipped with Residual Current Circuit Breaker (RCCB) or Earth Leakage Circuit Breaker (ELCB) to ensure no electrical hazard risk to end consumer.
 - b. **Soleplate temperature**
Check the soleplate temperature is within IEC temperature.
Measure the temperature of the Soleplate after the iron has reached steady state i.e connected to the mains for at least 15 minutes. The table below shows the temperature requirement.

Soleplate temperature (Deg C)		
Minimum	Maximum	
160	230	

- c. **Water leakage**
Check that there is no water leakage from any part of product during operation.
- d. **Functionality**
Check the functionality of the product:
 - Steaming & ASO (for ASO version only) is working properly.
 - Buttons/ Knobs: no sluggish, jammed and loose.
 - Filling Door: able to open freely and close with “click” sound
 - Thermostat Dial: able to turn clockwise & anticlockwise without jammed and loose.
- e. **Loose part**
Check that there are no loose parts such as extra screws in the product that can cause short circuit or product malfunction.

Product Information

Functions/ Features information

Easy to use

- Drip stop system
- Tap water suitable
- Safety Auto Shut Off (for ASO version only)
- Robust heel rest
- Extra large filling hole
- Water Tank Capacity: 320ml

Fast crease removal

- SteamGlide Plus
- Power: 2400W ~ 2600W
- Continuous steam output: 40g ~ 45 g/min
- Steam boost: 160g ~ 200g
- Spray feature
- Vertical Steam

Drip Stop

- The Water Tank Bottom has a Valve that is Controlled by a bimetal disc on the Soleplate. Water is only released into Steam Chamber via the Tank Valve when the Soleplate temperature is high enough. When the Soleplate temperature is too low, the Tank Valve is closed. This prevent water from dripping onto garment.

Water Advice

- In case you live in an area with hard water, (eg: water hardness more than 8dGH), it is Recommended to use a mixture of 50% tap water And 50% demineralized water.

SteamGlide Plus Soleplate

- Steam Glide Plus Soleplate with its advanced titanium layer and 6 layer coating delivers ultimate gliding performance over any fabric. Non-stick, scratch resistant and easy to keep clean.

Vertical Steam

- This features a steam boost in vertical position to remove wrinkles in hanging garments

Steam boost

- The steam boost helps to remove stubborn wrinkles.

Product size & weight

- Product dimension (W x H x L)
147 x 127 x 312 mm
- Weight of Iron: 1.552Kg

Product Information

Product Matrix



CTN	DST5010/10	DST5020/20 DST5020/21 *DST5020/26	DST5020/30	DST5021/20	DST5030/26
Power (W)	2400	2400	2400	2400	2400
Colour	Grey-white	Blue	Purple-pink	Pastel blue-white	Blue
Steam Output (g/min)	40	40	40	40	45
Steam Boost (g)	160	180	180	180	180
Auto Shut-Off	No	No	No	No	Yes
Ready Light Indicator	Yes	Yes	Yes	Yes	Yes
ECO Setting	Yes	Yes	Yes	Yes	Yes
Calc Solution	Calc Clean	Calc Clean	Calc Clean	Calc Clean	Calc Clean
Cord Length (m)	2.0	2.0 *2.5	2.0	2.0	2.5
Accessory / Gift included	No	No	No	No	No

Product Information

Product Matrix



CTN	DST5030/30 DST5031/30	DST5030/80	DST5040/80 DST5040/86	DST5041/30
Power (W)	2400	2400	2600	2600
Colour	Purple-pink	Purple-black	Black	Purple-black
Steam Output (g/min)	45	45	45	45
Steam Boost (g)	180	180	200	200
Auto Shut-Off	Yes	Yes	Yes	Yes
Ready Light Indicator	Yes	Yes	Yes	Yes
ECO Setting	Yes	Yes	Yes	Yes
Calc Solution	Calc Clean	Calc Clean	Calc Clean	Calc Clean
Cord Length (m)	2.0	2.0	2.0	2.0
Accessory / Gift included	No	No	No	No

Troubleshooting Guide

Problem	Possible root cause	Solution
No heating/ No power	Soleplate	Replace Soleplate Mtd Assy with Cover and replace Mainscord, apply Heat Sink Paste to Live & Neutral wire.
	Mainscord	Replace Mainscord, apply Heat Sink Paste to Live & Neutral wire.
	ASO (for ASO version)	Replace ASO
Water leaking	Water Tank Assy	Replace Water Tank Assy
	Soleplate	Replace Soleplate Mtd Assy with Cover and replace Mainscord, apply Heat Sink Paste to Live & Neutral wire.
Filling Door jammed/ can not close or open/ bounce up	Inlay Assy	Replace Inlay Assy
No Steam	Soleplate	Replace Soleplate Mtd Assy with Cover and replace Mainscord, apply Heat Sink Paste to Live & Neutral wire.
No spray	Water Tank Assy	Replace Water Tank Assy
	Spray Knob	Replace Spray Knob
No SOS	Soleplate	Replace Soleplate Mtd Assy with Cover and replace Mainscord, apply Heat Sink Paste to Live & Neutral wire.
	Water Tank Assy SOS Knob	Replace Water Tank Assy Replace SOS Knob
Backplate damaged/ cracked	Backplate Assy	Replace Backplate Assy & Mainscord, apply Heat Sink Paste to Live & Neutral wire.
T'stat Dial tight/ loose	T'stat Dial	Replace T'stat Dial
	Bullet Molded	Replace Bullet Molded
	Bullet Spring	Replace Bullet Spring
Not lighting up	Lamp Assy	Replace Lamp Assy
Part damaged, broken, short molding, cosmetic defect & sharp edges	Tank Top Seal	Replace Tank Top Seal
	SOS Knob	Replace SOS Knob
	Spray Knob	Replace Spray Knob
	Backplate	Replace Backplate
	Ball Swivel	Replace Ball Swivel
	T'stat Dial	Replace T'stat Dial
	Bullet Molded	Replace Bullet Molded
Bullet Spring	Replace Bullet Spring	

Disassembly Instructions

Before dismantling :



Ensure the plug is disconnected from the mains and Soleplate is not hot.

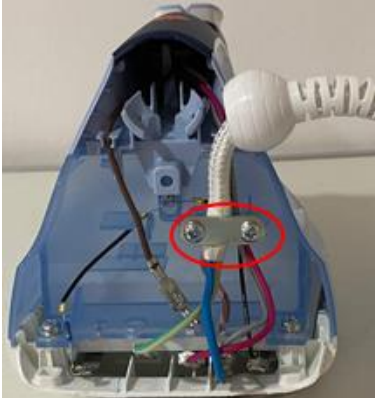
1 Remove Screw A



2 Remove Backplate 10



3 Remove 2x Screw B & Clamping Plate



4 Remove Lamp Assy 2 & disconnect all wires



5 Remove SOS Knob 7 & Spray Knob 8



6 Open up Filling Door, remove Screw C



7 Remove Inlay Assy 9



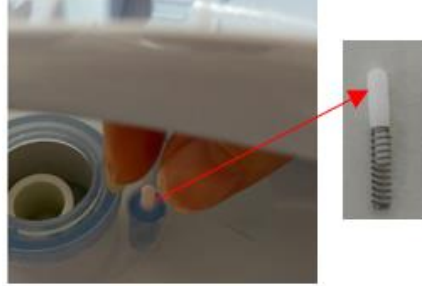
8 Remove Tank Top Seal 3 & ASO 6 (ASO version)



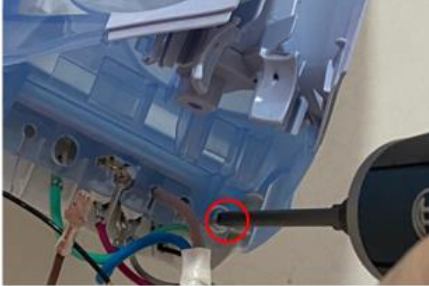
9 Remove T'stat Dial Prted 12



10 Remove Bullet Molded 13 & Spring Bullet 14



11 Remove 2x Screw D



12 Remove Water Tank Assy 4



13 Remove T'stat Bush & Soleplate Mtd Assy with Cover 1



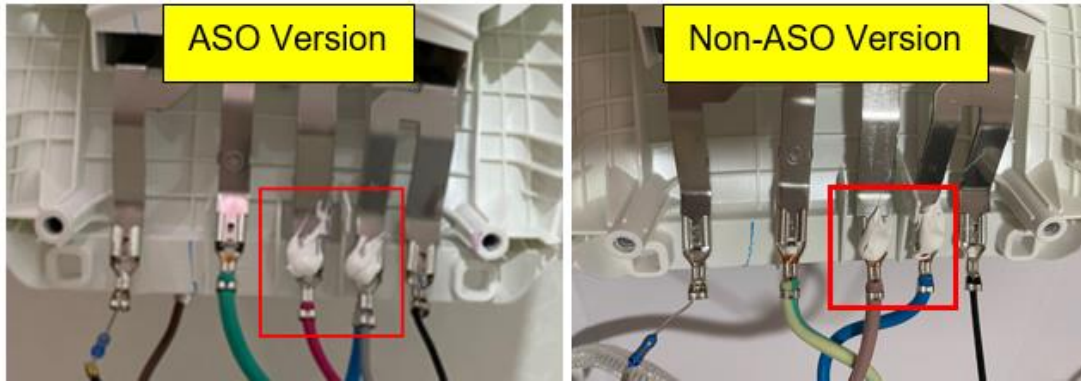
14 Remove Mainscord 15 & Ball Swivel 11



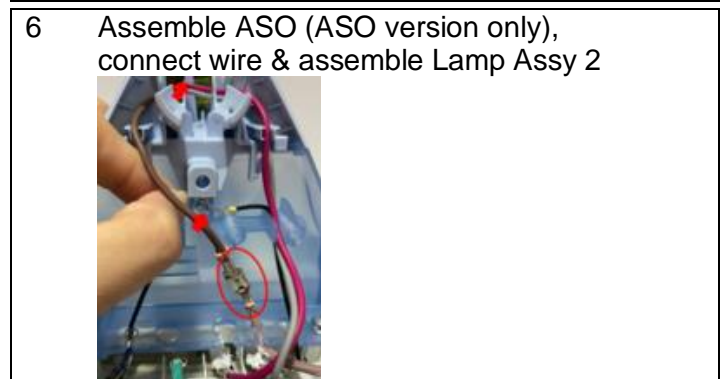
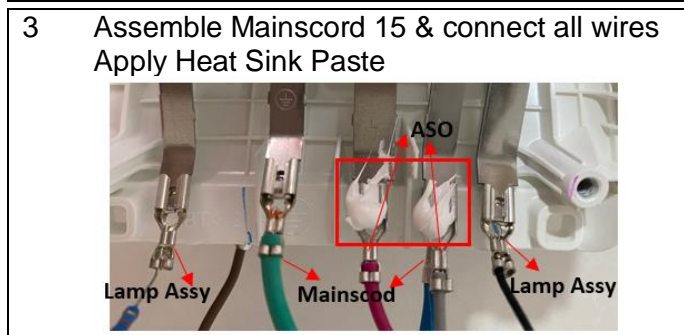
Reassembly Instructions

Cautions:

- Before fastening screw, relocate the screw with first thread. Once done fasten the screw.
- Do not drop, hit or knock the ASO (for ASO version only).
- Ensure there is click sound after Connector to Terminal engage. Refer to wiring diagram for detail.
- Take note of live part (red & blue wire) must apply with **Heat Sink Paste** after wire dressing on area as shown.



Notes: Heat Sink Paste – Dow Corning 340 Heat Sink Compound to be used.



7 Assemble & fasten 2x Screw D & dress all wires



8 Assemble Clamping Plate, Assemble & fasten 2x Screw B



9 Assemble Inlay Assy 9



10 Assemble & fasten Screw C
Assemble Tank Top Seal 3



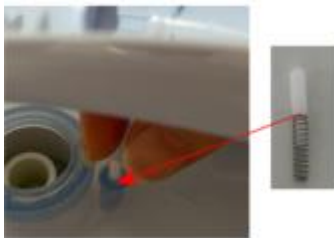
11 Assemble Ball Swivel 11 and Backplate 10
Assemble & fasten Screw A



12 Assemble SOS Knob 7 & Spray Knob 8



13 Assemble Spring Bullet 14,
assemble Bullet Moulded 13



14 Assemble T'stat Dial prted 12



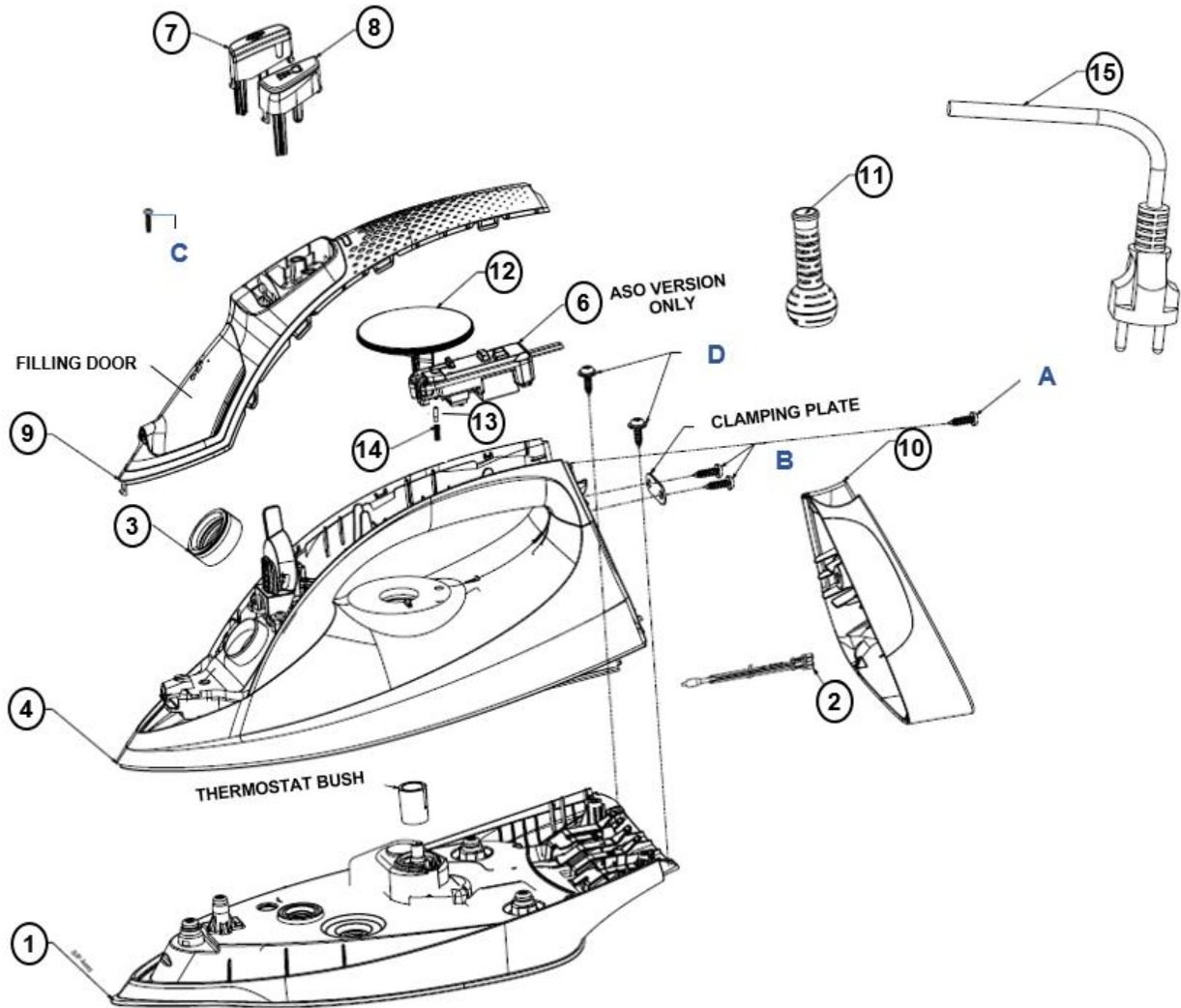
Service Lists

POS	DESCRIPTION	DST5030/26	DST5010/10	DST5031/30	DST5040/86
		889004226150 MALAYSIA HONG KONG SINGAPORE	889003810040 TURKEY	889004330300 RUSSIA	889004486150 MALAYSIA HONG KONG SINGAPORE
1	S/P MTD ASSY WITH COVER	423902288601	423902288601	423902288601	423902288611
2	LAMP ASSY (ASO)	423902282471	423902282471	423902282471	423902282471
3	TANK TOP SEAL	423902288301	423902282501	423902288431	423902288481
4	WATER TANK ASSY	423902288311	423902288381	423902288441	423902288491
6	ASO	423902283421	-	423902283421	423902283421
7	SOS KNOB	423902288321	423902288391	423902288451	423902288501
8	SPRAY KNOB	423902288331	423902288401	423902288461	423902288511
9	INLAY ASSY	423902288341	423902288411	423902288471	423902288521
10	BACKPLATE	423902288351	423902288421	423902282951	423902282881
11	BALL SWIVEL	423902282971	423902282971	423902282971	423902283651
12	T'STAT DIAL PRTED	423902288371	423902288371	423902288371	423902288541
13	BULLET MOLDED	423902283261	423902283261	423902283261	423902283261
14	SPRING BULLET	423902283271	423902283271	423902283271	423902283271
15	MAINSCORD	423902274331	423902273971	423902273971	423902288551

POS	DESCRIPTION	DST5041/30 889004530300 RUSSIA
1	S/P MTD ASSY WITH COVER	423902288611
2	LAMP ASSY (ASO)	423902282471
3	TANK TOP SEAL	423902288431
4	WATER TANK ASSY	423902288561
6	ASO	423902283421
7	SOS KNOB	423902288571
8	SPRAY KNOB	423902288581
9	INLAY ASSY	423902288591
10	BACKPLATE	423902282881
11	BALL SWIVEL	423902283651
12	T'STAT DIAL PRTED	423902288541
13	BULLET MOLDED	423902283261
14	SPRING BULLET	423902283271
15	MAINSCORD	423902274301

Service Lists

- Exploded view



Notes:

Scale: Not to scale

Revision History

Version	Records	Author	Date
1	New release	Chong Yoke Lan	24-Dec-2020